



12/27 Windward Parade Chiswick NSW

2  2  2 

Immaculately presented, this contemporary apartment offers an ideal low-maintenance lifestyle in a resort style setting. Offering expansive light-filled interiors with open plan living and dining spaces flowing effortlessly out to a spacious entertainer's balcony.

Price : \$ 980,000

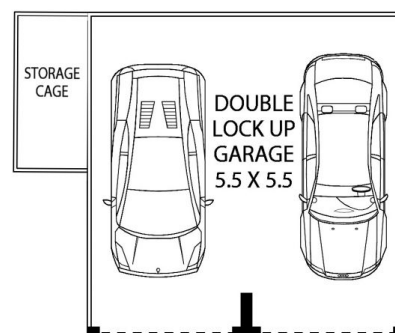
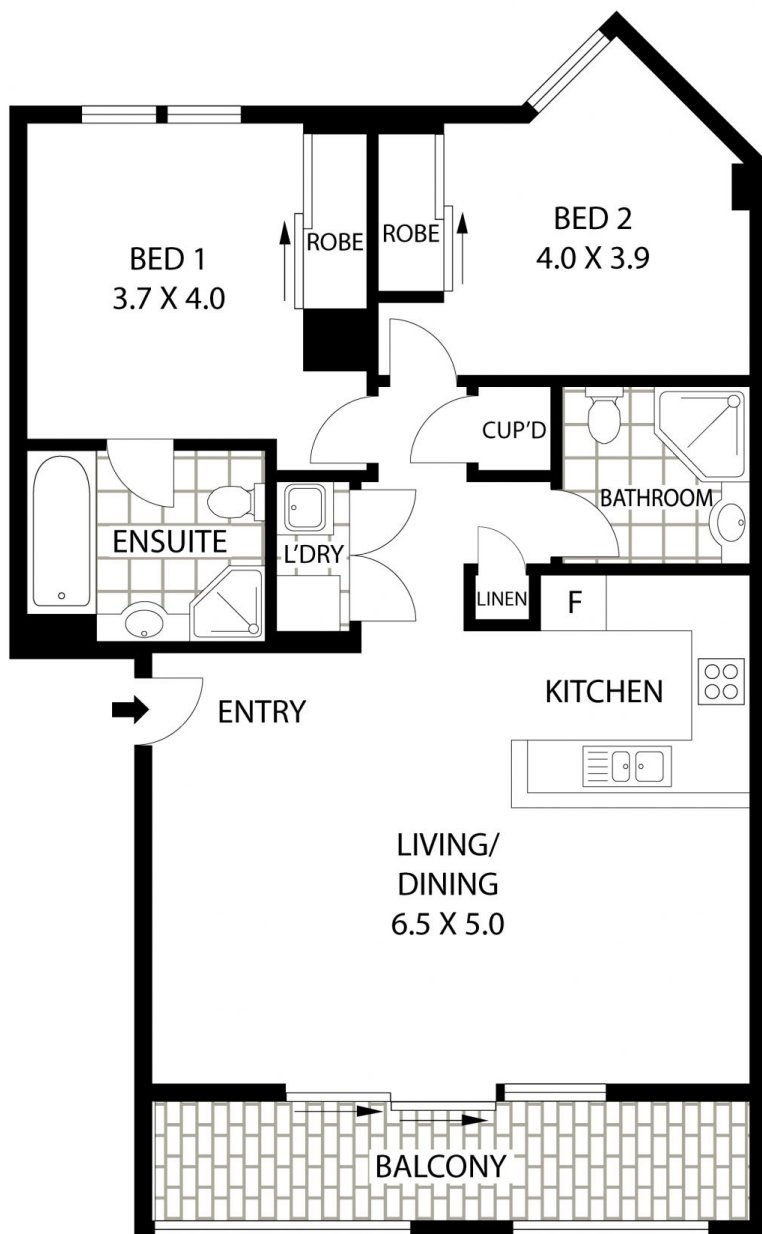
View : <https://www.landmarkrealtygroup.com.au/sale/nsw/inner-west/chiswick/residential/apartment/6608384>

Nestled in the prestigious "Nautica" Waterfront development on the stunning shores of Abbotsford Bay, providing a care-free lifestyle that is second to none.

- * Spacious, light-filled living and dining room opens out to entertaining balcony
- * Sleek stone kitchen, Stainless Steel appliances; gas cooking, oven, dishwasher
- * Large sun-filled Master with floor-to-ceiling built-in robes and stylish ensuite
- * Good sized 2nd bedroom, ample storage space, large



Lee Chan
 02 8221 8819



INTERNAL AREA (INCLUDING BALCONY): 91 SQM
TOTAL AREA (INCLUDING L.U.G. + STORAGE): 123 SQM



12/27 WINDWARD PARADE

CHISWICK

FloorPlanDisclaimer: Mind the Gap (mtg) floor plans / site plans are intended as an approximate guide only. No representations or warranties of any nature are given or intended and any person using this information other than as a guide should always rely on their own enquiries. Mind the Gap property marketing services/ 1300 133 145 / Photography, Floor plans, Copywriting, Video, Online, Design / www.mindthegap.com.au

