



**164/4 Dolphin Close Chiswick NSW**

1  1  1 

Set in a peaceful courtyard setting, sits this stylishly appointed one-bedroom apartment. Offering open plan light-filled interiors and a spacious alfresco setting perfect for year-round entertaining. The apartment promises a relaxing low-maintenance lifestyle in an unbeatable lifestyle location

**Price** : \$ 730,000

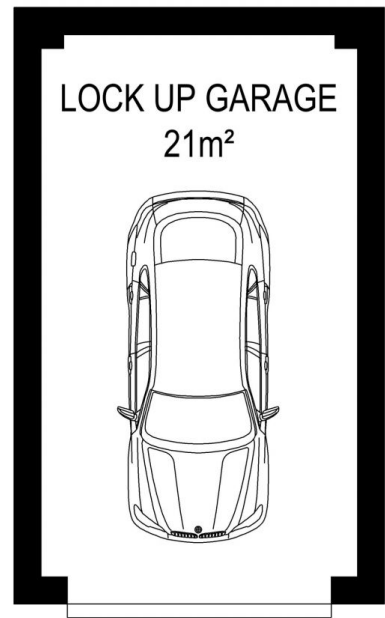
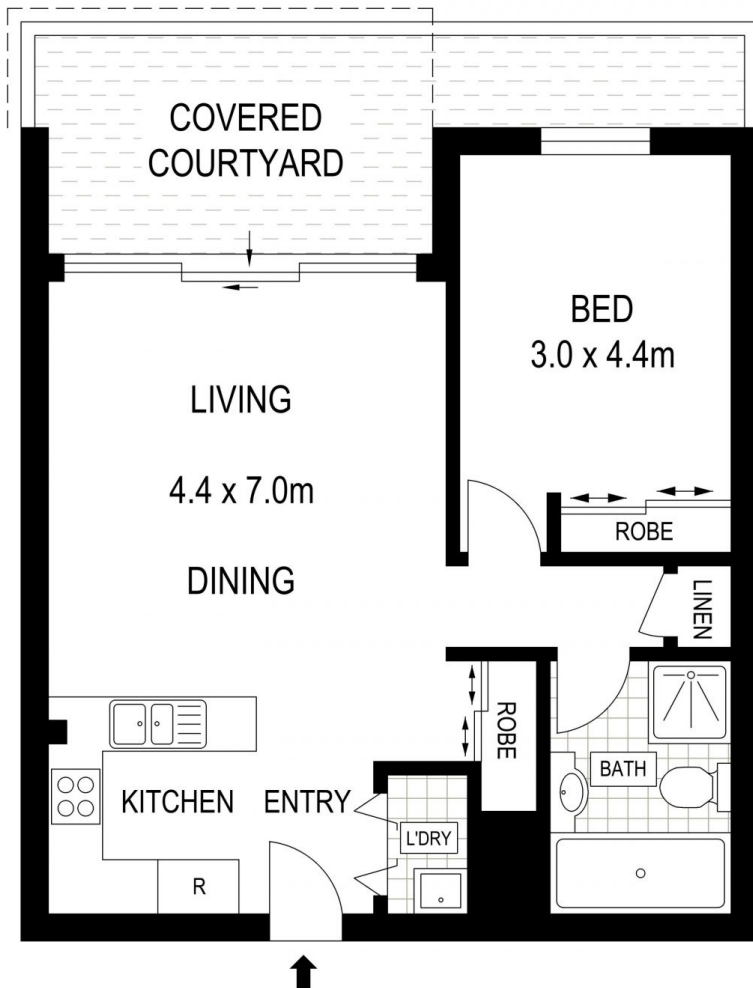
**View** : <https://www.landmarkrealtygroup.com.au/sale/nsw/inner-west/chiswick/residential/apartment/6608387>

Nestled in the enviable Riviera Waterfront development, offering a magnificent lifestyle with full resort facilities and positioned for the utmost convenience, easy stroll to bayside parks, shops, caf?s and transport services.

- \* Sun-drenched covered courtyard perfect for year-round entertaining, North/West facing
- \* Spacious light-filled living & dining that flows to alfresco setting through floor-ceiling doors
- \* Sleek stone kitchen; S/S appliances, gas cook top, oven,



**Lee Chan**  
02 8221 8819



**GROUND FLOOR**



**164/4 Dolphin Close**

**Chiswick**

**Disclaimer:** Floor plans / site plans are intended as an approximate guide only. No representations or warranties of any nature are given or intended and any person or company using this information other than as a guide should always rely on their own enquiries. Proudly supported by [www.mypropertymedia.com.au](http://www.mypropertymedia.com.au)

APPROXIMATE  
 INTERNAL : 67 m<sup>2</sup>  
 INC. COURTYARD  
 TOTAL : 94 m<sup>2</sup>  
 INC. LUG / STORAGE

