

45/1 Janoa Place Chiswick NSW

2  2  1 

A sanctuary of style and sophistication, this premier top floor apartment has been intuitively designed to create a stunning, airy and light-filled living space. Seamless flow from the open-plan living areas to a spacious Easterly facing entertaining terrace, offering an enviable lifestyle of indoor/outdoor living to come home and enjoy.

Located in the prestigious Nautica Waterfront Estate on the stunning shores of Abbotsford Bay and surrounded by beautifully manicured gardens. Positioned for the utmost convenience, easy stroll to bayside parks, shops, caf?s and transport services.

- * Expansive East-facing entertaining terrace, city skyline and park views
- * Beautifully presented open plan living and dining area, abundance of natural light

Price : \$ 1,015,000

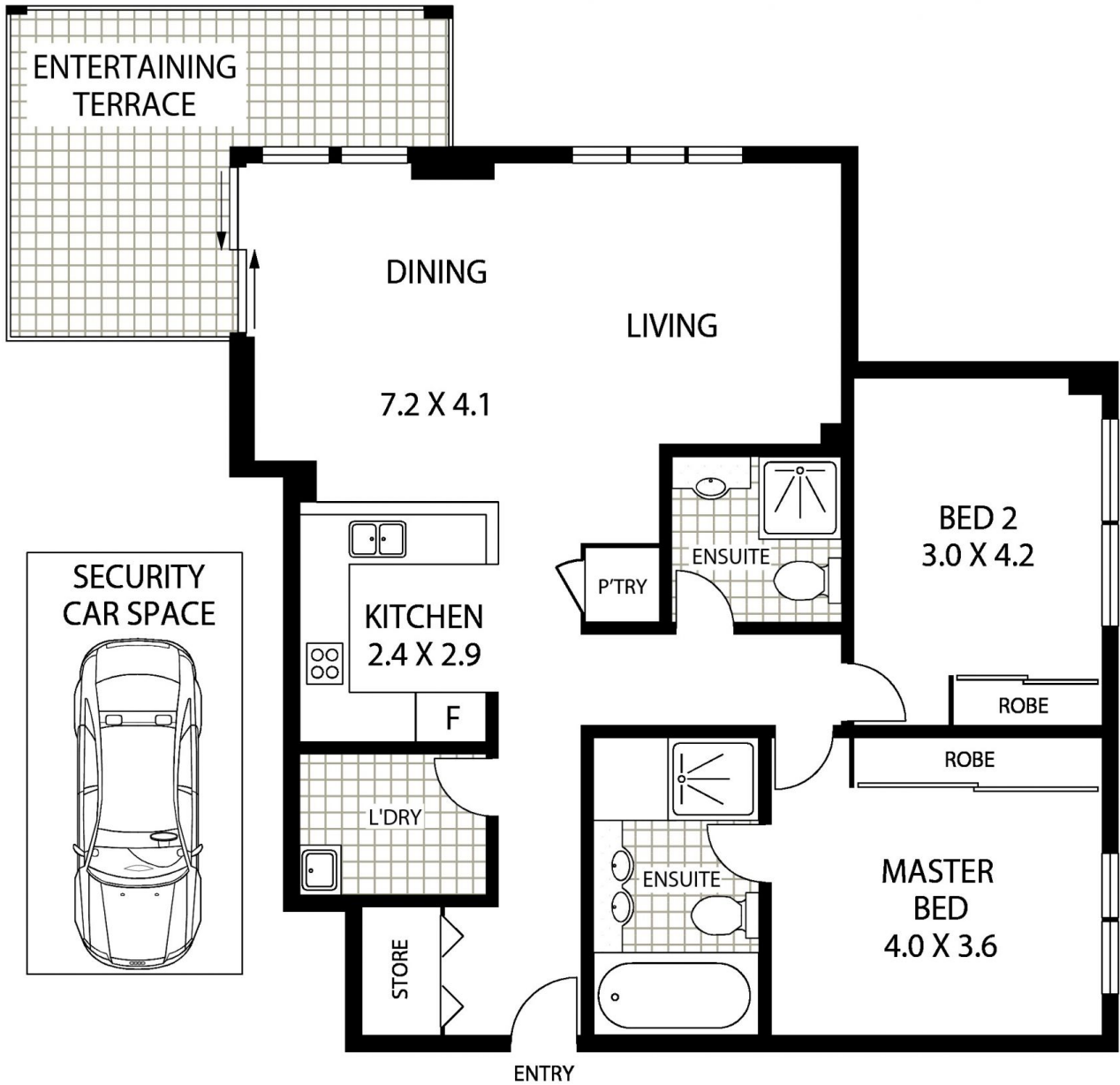
View : <https://www.landmarkrealtygroup.com.au/sale/nsw/inner-west/chiswick/residential/apartment/6608388>



Lee Chan
02 8221 8819



Eric Chan
02 8221 8819



TOP FLOOR



INTERNAL AREA:- 102 SQM (INCLUDING TERRACE)
 TOTAL AREA:- 117 SQM (INCLUDING CAR SPACE)

45/1 JANOA PLACE

CHISWICK



Floor Plan Disclaimer: Mind the Gap (mtg) floor plans / site plans are intended as an approximate guide only. No representations or warranties of any nature are given or intended and any person using this information other than as a guide should always rely on their own enquiries. Mind the Gap property marketing services / 1300 133 145 / Photography, Floor plans, Copywriting, Video, Online, Design / www.mindthegap.com.au