




Actual View



441/1 Searay Close Chiswick NSW

2  2  2 

Nestled in a tranquil waterfront setting, this stunning top-floor apartment captures the sweeping, picturesque views of Abbotsford Bay, occupying a prized North facing position, it showcases stylish, airy interiors with an abundance of natural light. Providing a peaceful sanctuary to come home and enjoy as well as a wonderful sense of privacy and seclusion.

Nestled in the enviable Riviera Waterfront development, offering a magnificent lifestyle with full resort facilities and positioned for the utmost convenience, easy stroll to bayside parks, shops, caf?s and transport services.

* Desirable top floor corner position overlooking a horizon of greenery and water

* Light-filled living and dining spills seamlessly to the alfresco setting

Price : \$ 1,330,000

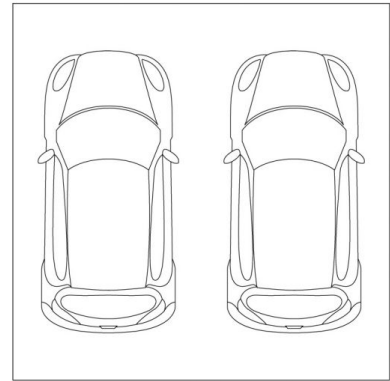
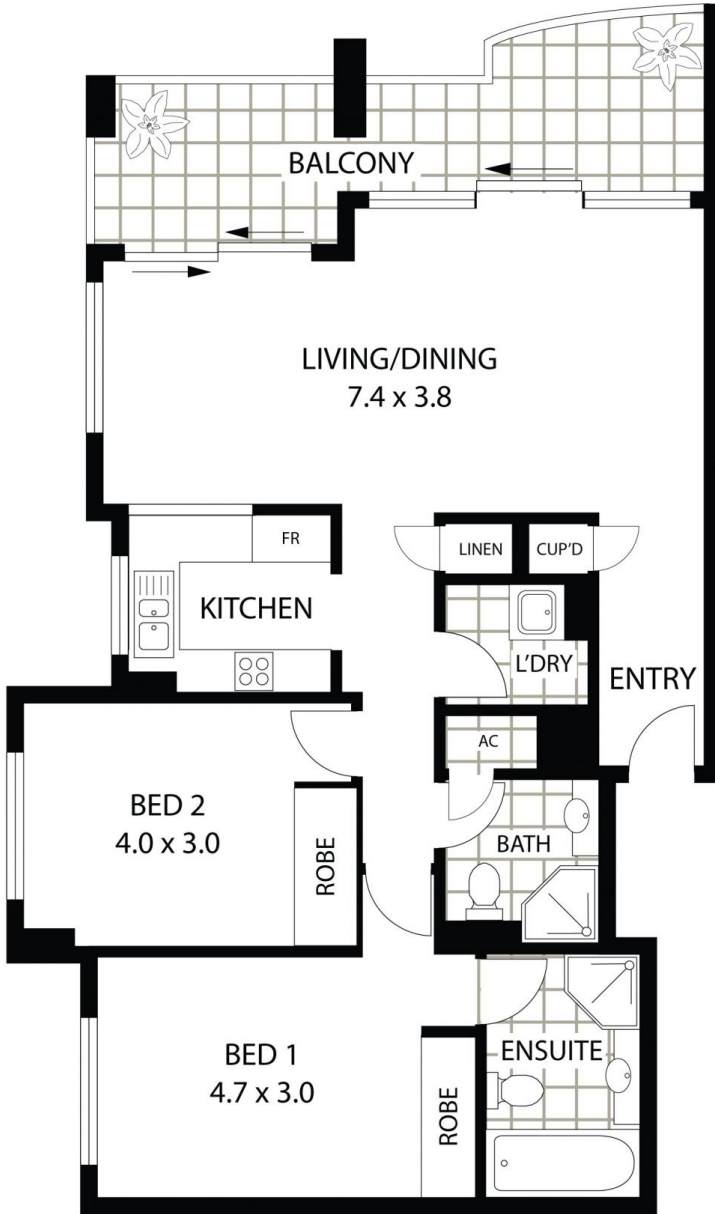
View : <https://www.landmarkrealtygroup.com.au/sale/nsw/inner-west/chiswick/residential/apartment/6608391>



Lee Chan
02 8221 8819



Eric Chan
02 8221 8819



DOUBLE SECURE CAR SPACE
29SQM



441/1 SEARAY CLOSE

CHISWICK

INTERNAL AREA (INCL BALCONY): 975SQM
TOTAL AREA (INCL CAR): 126 SQM

Floor Plan Disclaimer: Mind the Gap (mtg) floor plans / site plans are intended as an approximate guide only. No representations or warranties of any nature are given or intended and any person using this information other than as a guide should always rely on their own enquiries. Mind the Gap property marketing services/ 1300 133 145 / Photography, Floor plans, Copywriting, Video, Online, Design / www.mindthegap.com.au

