



175/4 Dolphin Close Chiswick NSW

1  1  1 

Set on a desirable elevated setting this spacious one-bedroom apartment offers an exceptional lifestyle of low-maintenance living in mind, with welcoming free-flowing interiors and a spacious covered balcony ideal for year round entertaining.

Price : \$ 720,000

View : <https://www.landmarkrealtygroup.com.au/sale/nsw/inner-west/chiswick/residential/apartment/6644342>

Nestled in the enviable Riviera Waterfront development, offering a magnificent lifestyle with full resort facilities and positioned for the utmost convenience, easy stroll to bayside parks, shops, caf?s and transport services.

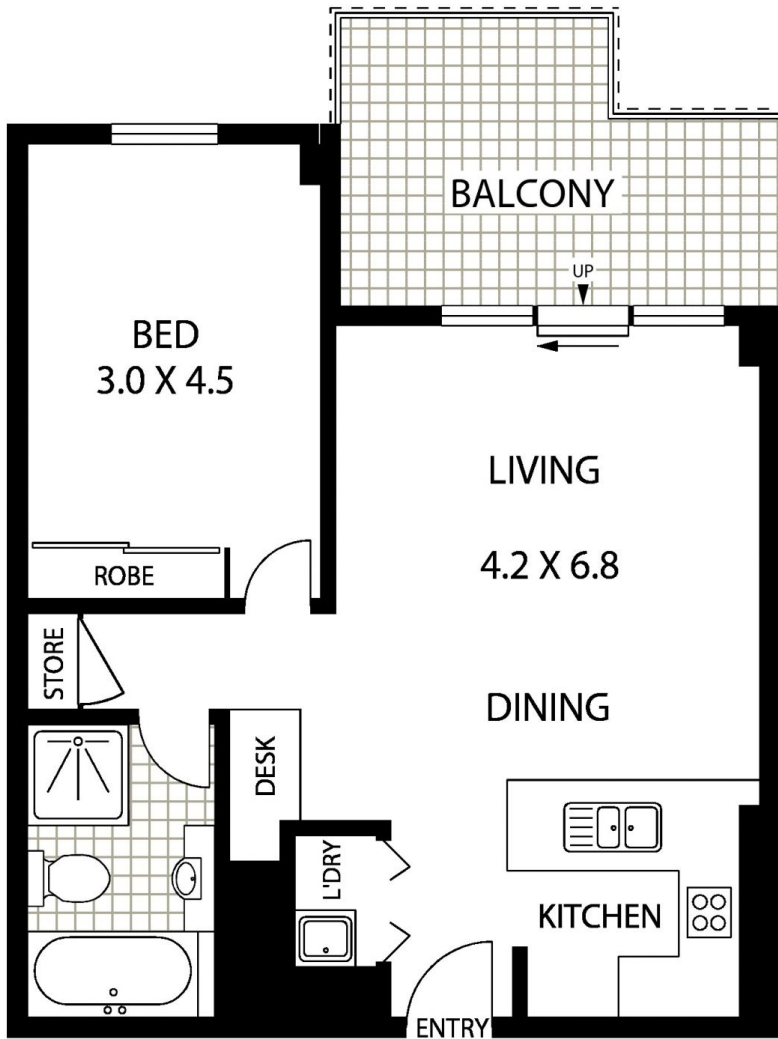
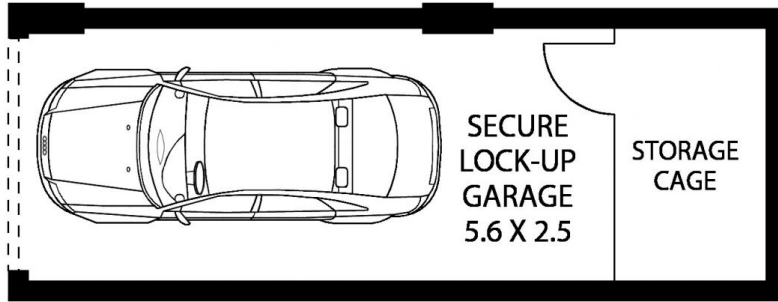
- * Desirable elevated corner position, Easterly facing, leafy outlook
- * Open plan, light-filled living & dining room spills out to spacious balcony
- * Sleek stone kitchen: S/S appliances, gas cooktop, oven, dishwasher



Lee Chan
02 8221 8819



Eric Chan
02 8221 8819



LEVEL TWO APARTMENT

INTERNAL AREA :- 63 SQM (INCLUDING BALCONY)
TOTAL AREA :- 82 SQM (INCLUDING GARAGE AND STORAGE)



175/4 DOLPHIN CLOSE

CHISWICK



Floor Plan Disclaimer: Mind the Gap (mtg) floor plans / site plans are intended as an approximate guide only. No representations or warranties of any nature are given or intended and any person using this information other than as a guide should always rely on their own enquiries. Mind the Gap property marketing services / 1300 133 145 / Photography, Floor plans, Copywriting, Video, Online, Design / www.mindthegap.com.au