



**77/1 Manta Place Chiswick NSW**

1  1  1 

Set in a peaceful courtyard setting, sits this stylishly appointed one-bedroom apartment. Offering open plan light-filled interiors and a spacious alfresco setting perfect for year-round entertaining. The apartment promises a relaxing low-maintenance lifestyle in an unbeatable lifestyle location

**Price** : \$ 730,000

**View** : <https://www.landmarkrealtygroup.com.au/sale/nsw/inner-west/chiswick/residential/apartment/6659075>

Nestled in the enviable Nautica Waterfront development, offering a magnificent lifestyle with full resort facilities and positioned for the utmost convenience, easy stroll to bayside parks, shops, caf?s and transport services.

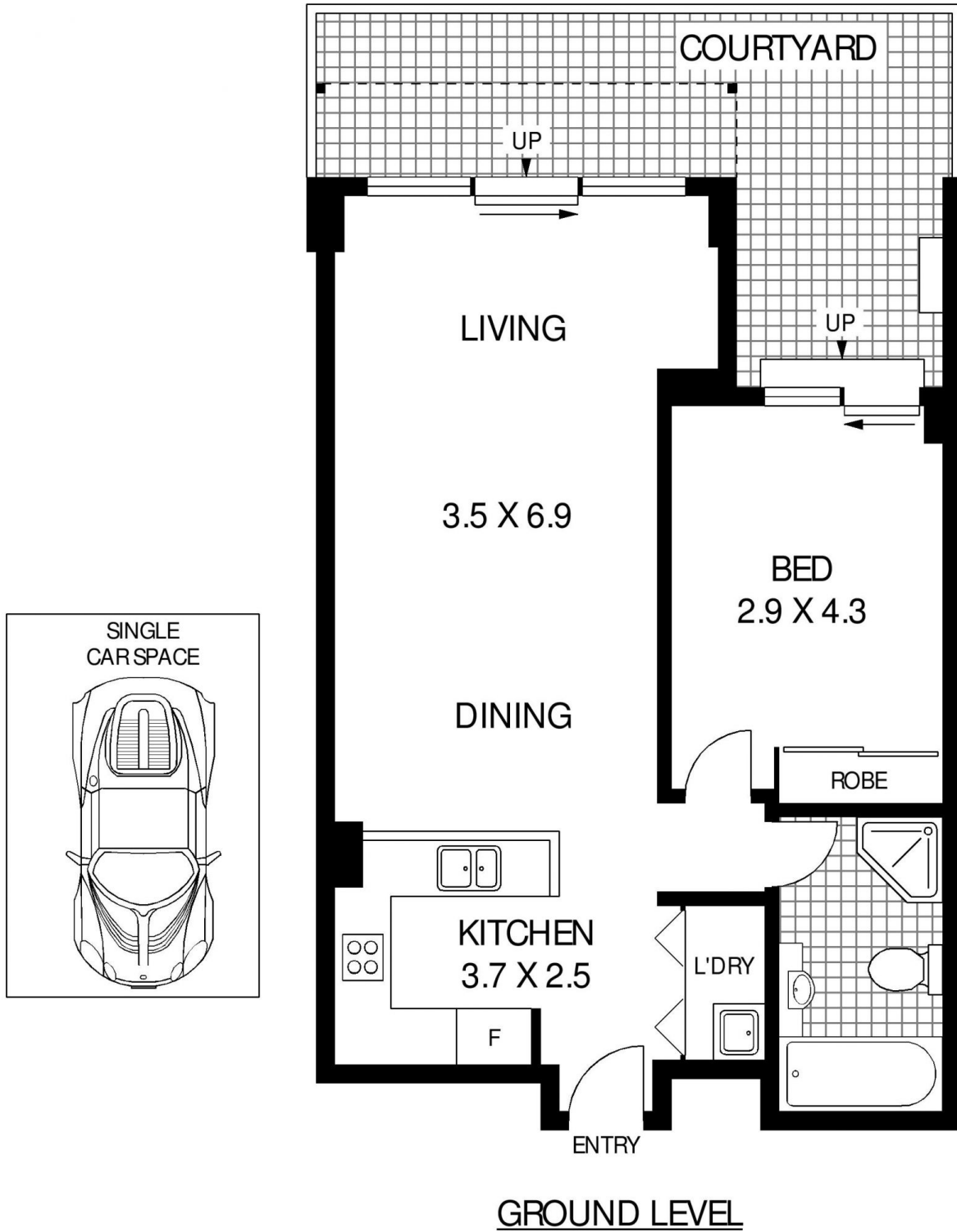
- \* Private courtyard perfect for year-round entertaining, Easterly facing
- \* Spacious light-filled living & dining that flows to alfresco setting through floor-ceiling doors
- \* Sleek stone kitchen; S/S appliances, gas cook top, oven,



**Lee Chan**  
02 8221 8819



**Eric Chan**  
02 8221 8819



**77/1 MANTA PLACE**

**CHISWICK**

AREA: 73 SQM (INCLUDES COURTYARD)  
TOTAL: 88 SQM (INCLUDES CAR SPACE)



**Floor Plan Disclaimer:** Mind the Gap (mtg) floor plans / site plans are intended as an approximate guide only. No representations or warranties of any nature are given or intended and any person using this information other than as a guide should always rely on their own enquiries. Mind the Gap property marketing services / 1300 133 145 / Photography, Floor plans, Copywriting, Video, Online, Design / [www.mindthegap.com.au](http://www.mindthegap.com.au)