



336/1 The Promenade Chiswick NSW

2  1  1 

This ground floor waterfront apartment is undeniably stunning. Floor-ceiling windows open out to a sun-drenched terrace capturing a horizon of lush greenery and water views. Destined for unforgettable entertaining and total relaxation gazing over the area's beautiful surroundings. With immaculately maintained interiors and only steps way to the water's edge.

Nestled in the enviable Riviera Waterfront development, offering a magnificent lifestyle with full resort facilities and positioned for the utmost convenience, easy stroll to bayside parks, shops, cafés and transport services.

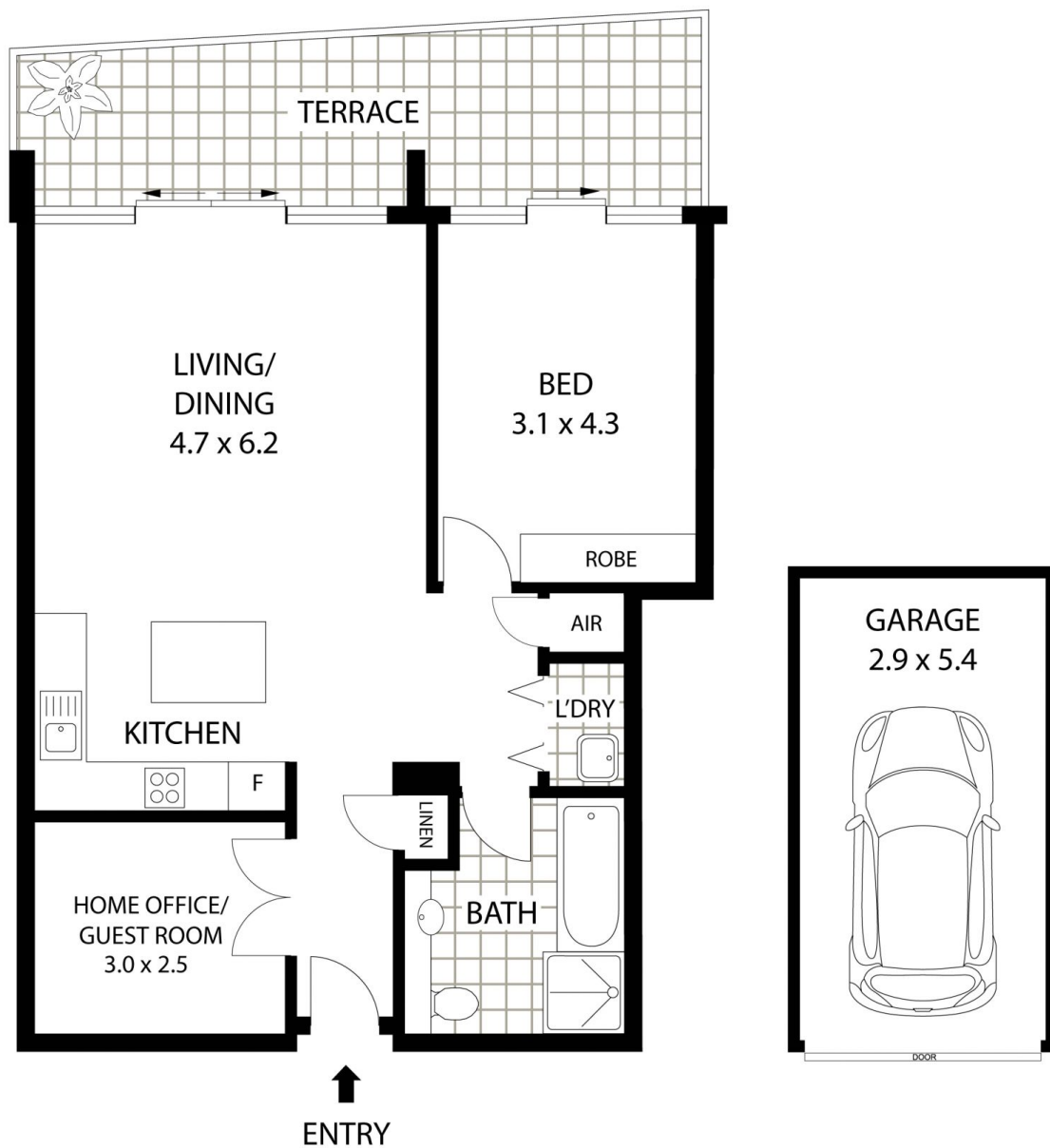
* Expansive light filled living and dining area leading out to the terrace

* Private terrace entertaining terrace with lush greenery and water vistas

View : <https://www.landmarkrealtygroup.com.au/lease/nsw/inner-west/chiswick/residential/apartment/6703115>



Eric Chan
02 8221 8819



336/1 THE PROMENADE

CHISWICK

FloorPlanDisclaimer: Mind the Gap (mtg) floor plans / site plans are intended as an approximate guide only. No representations or warranties of any nature are given or intended and any person using this information other than as a guide should always rely on their own enquiries. Mind the Gap property marketing services/ 1300 133 145 / Photography, Floor plans, Copywriting, Video, Online, Design / www.mindthegap.com.au

AREA (INCL. COURTYARD): 845QM
TOTAL AREA (INCL. LUG): 1005QM

