



32/1 Janoa Place Chiswick NSW

3  2  2 

Nestled in a peaceful park-side position this stunning apartment showcases stylish open-plan interiors flooded with natural light. Tastefully renovated throughout, it is immaculately presented and offers sophisticated living and entertaining a cut above the rest.

Price : \$ 1,480,000

View : <https://www.landmarkrealtygroup.com.au/sale/nsw/inner-west/chiswick/residential/apartment/6737648>

A perfect blend of contemporary living in a great lifestyle location, this apartment is enviably located in the prestigious Nautica Waterfront Estate on the stunning shores of Abbotsford Bay and surrounded by beautifully manicured gardens. Positioned for the utmost convenience, easy stroll to bayside parks, shops, caf?s and transport services.

* Sun-drenched alfresco setting overlooking park views, East facing, outdoor awning

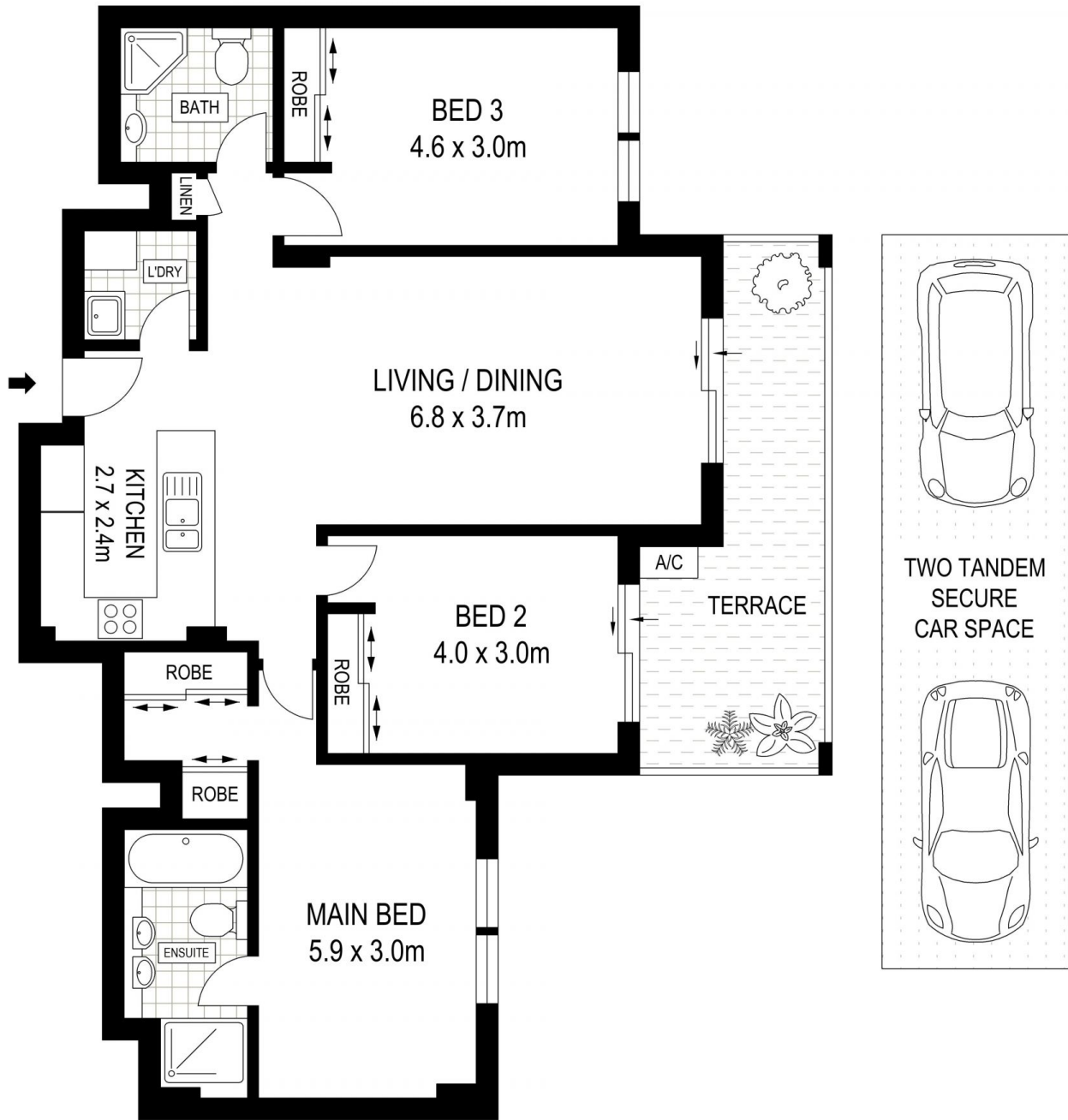
* Spacious, light-filled living and dining room flows to



Lee Chan
02 8221 8819



Eric Chan
02 8221 8819



LEVEL ONE



32/1 JANOA PLACE

CHISWICK

APPROXIMATE
 INTERNAL : 110 m² (INCL. BALCONY)
 TOTAL : 140 m² (INCL. CAR SPACE)

Disclaimer: Floor plans / site plans are intended as an approximate guide only. No representations or warranties of any nature are given or intended and any person or company using this information other than as a guide should always rely on their own enquiries. Proudly supported by www.mypropertymedia.com.au

