



17/27 Windward Parade Chiswick NSW

2 🛏 2 🚿 2 🚗

Immaculately presented, this contemporary apartment offers an ideal low-maintenance lifestyle in a resort style setting. Boasting an expansive open-plan living & dining area with an abundance of natural light.

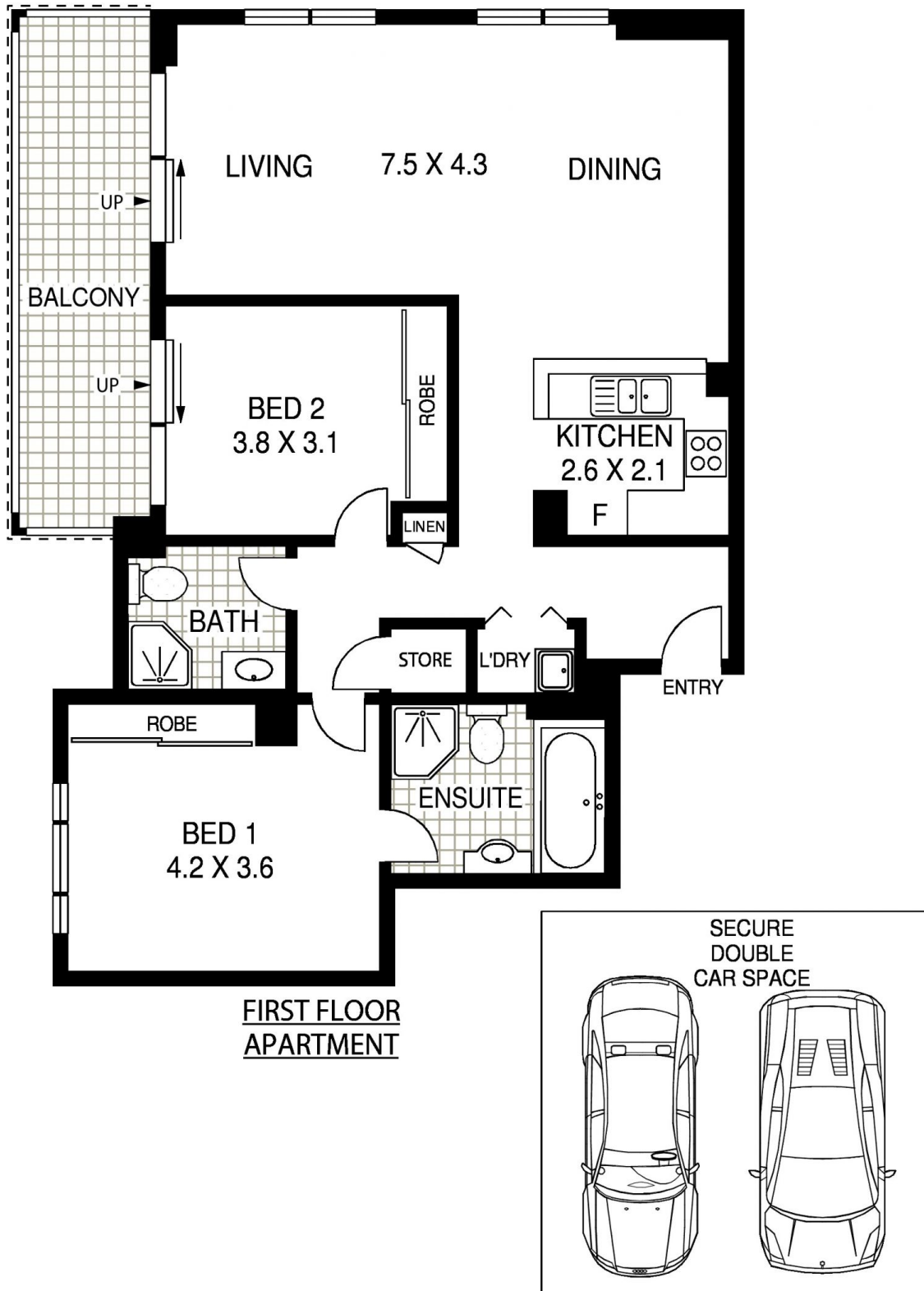
View : <https://www.landmarkrealtygroup.com.au/lease/nsw/inner-west/chiswick/residential/apartment/6983417>

Nestled in the prestigious "Nautica" Waterfront development on the stunning shores of Abbotsford Bay, providing a care-free lifestyle that is second to none.

- * Abundance of natural light and spacious open plan living & dining
- * Gourmet kitchen with Smeg S/S Appliances
- * Queen sized bedrooms with built-in wardrobes
- * Deluxe fully tiled bathrooms, master with ensuite
- * Air conditioning, internal laundry with dryer
- * Secure double car space, internal lift access
- * Boutique block of 24 apartments



Eric Chan
02 8221 8819



**FIRST FLOOR
APARTMENT**

INTERNAL AREA: 98SQM (INCLUDING BALCONY)
TOTAL AREA: 130SQM (INCLUDING DOUBLE SECURE CAR SPACE)



17/27 WINDWARD PARADE

CHISWICK



Floor Plan Disclaimer: Mind the Gap (mtg) floor plans / site plans are intended as an approximate guide only. No representations or warranties of any nature are given or intended and any person using this information other than as a guide should always rely on their own enquiries. Mind the Gap property marketing services / 1300 133 145 / Photography, Floor plans, Copywriting, Video, Online, Design / www.mindthegap.com.au