






119/1 Manta Place Chiswick NSW

2  2  2 

Occupying a prized top floor corner position, this immaculately presented apartment is flooded with natural light from its desirable North-East facing. With stylish free-flowing interiors and expansive proportions, there is a seamless flow out to a large wrap-around terrace ideal for alfresco entertaining.

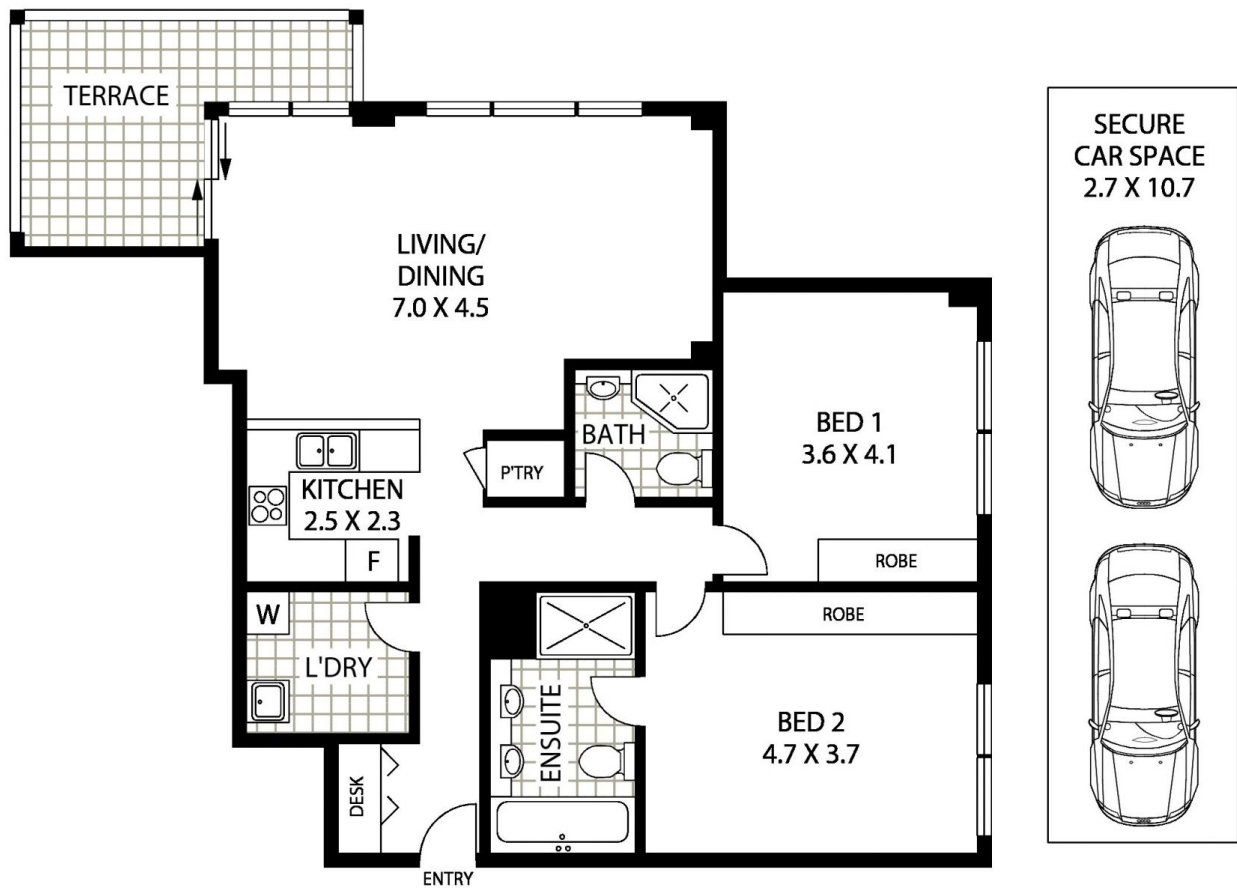
A perfect blend of contemporary living in a great lifestyle location, this apartment is enviably located in the prestigious Nautica Waterfront Estate on the stunning shores of Abbotsford Bay and surrounded by beautifully manicured gardens. Positioned for the utmost convenience, easy stroll to bayside parks, shops, cafés and transport services.

* Sun-drenched wraparound terrace with a desirable North-East facing

View : <https://www.landmarkrealtygroup.com.au/lease/nsw/inner-west/chiswick/residential/apartment/7062510>



Eric Chan
 02 8221 8819



INTERNAL AREA: 103 SQM (INCLUDING TERRACE)
TOTAL AREA:- 133 SQM (INCLUDING CAR SPACE)



119/1 MANTA PLACE

CHISWICK



Floor Plan Disclaimer: Mind the Gap (mtg) floor plans / site plans are intended as an approximate guide only. No representations or warranties of any nature are given or intended and any person using this information other than as a guide should always rely on their own enquiries. Mind the Gap property marketing services / 1300 133 145 / Photography, Floor plans, Copywriting, Video, Online, Design / www.mindthegap.com.au