



222/4 Bechert Road Chiswick NSW

2  2  2 

Immaculately presented, this contemporary apartment offers an ideal low-maintenance lifestyle in a resort style setting. Brimming with natural light from its elevated corner position, it offers stylish interiors and open plan living and dining spaces flowing effortlessly out to a spacious entertainer's balcony.

Price : \$ 1,190,000

View : <https://www.landmarkrealtygroup.com.au/sale/nsw/inner-west/chiswick/residential/apartment/7088626>

Nestled in the enviable Riviera Waterfront development, offering a magnificent lifestyle with full resort facilities and positioned for the utmost convenience, easy stroll to bayside parks, shops, cafés and transport services.

* Abundance of natural light, desirable elevated corner position, North facing

* Spacious open plan living & dining space leads to alfresco, built-in study area

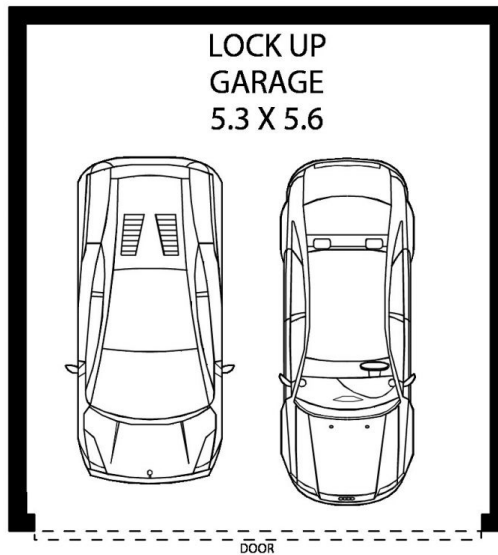
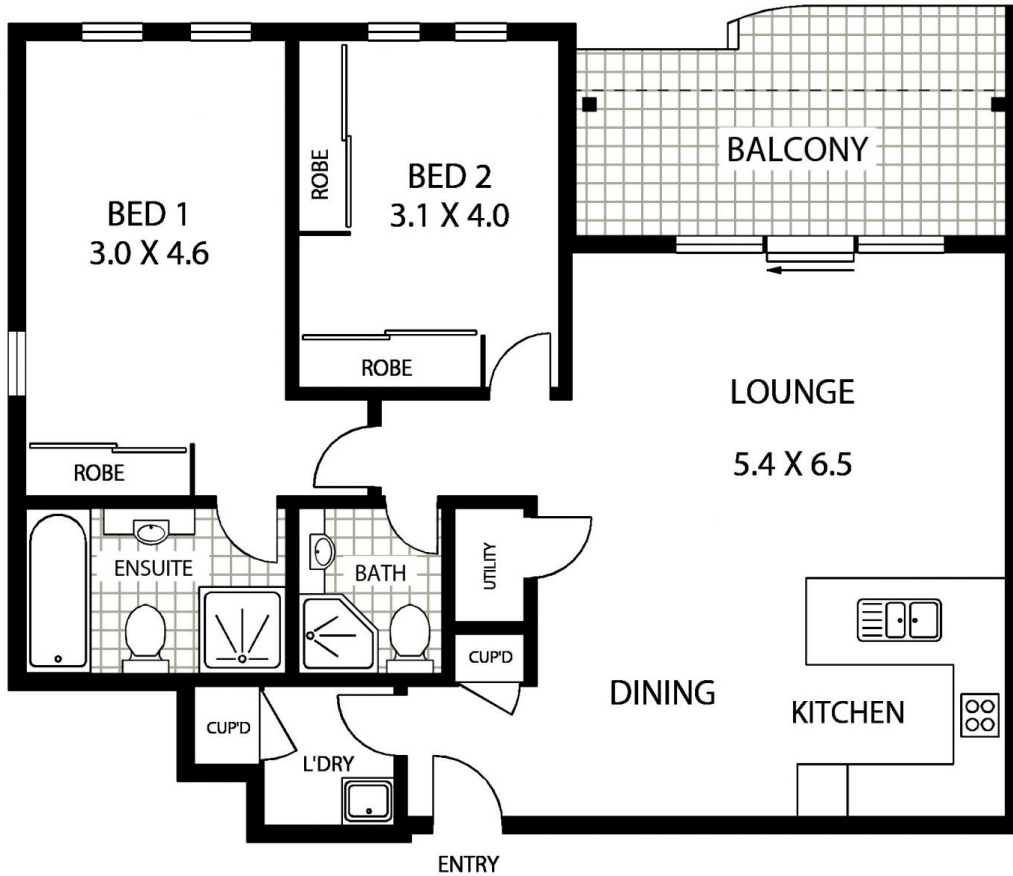
* Modern kitchen with S/S appliances, gas cook top, oven,



Lee Chan
02 8221 8819



Eric Chan
02 8221 8819



AREA: 93 SQM (INCLUDING BALCONY)
TOTAL: 123 SQM (INCLUDING LUG)



222/4 BECHERT ROAD

CHISWICK

Floor Plan Disclaimer: Mind the Gap (mtg) floor plans / site plans are intended as an approximate guide only. No representations or warranties of any nature are given or intended and any person using this information other than as a guide should always rely on their own enquiries. Mind the Gap property marketing services / 1300 133 145 / Photography, Floor plans, Copywriting, Video, Online, Design / www.mindthegap.com.au

