






117/1 Manta Place Chiswick NSW

3  2  2 

Nestled in a tranquil waterside setting, this stunning apartment showcases stylish open-plan interiors flooded with natural light. The spacious living and dining area seamlessly flows throughout with an inviting alfresco area overlooking a corridor of lush greenery and water views, offering sophisticated living and entertaining a cut above the rest.

A perfect blend of contemporary living in a great lifestyle location, this apartment is enviably located in the prestigious Nautica Waterfront Estate on the stunning shores of Abbotsford Bay and surrounded by beautifully manicured gardens. Positioned for the utmost convenience, easy stroll to bayside parks, shops, cafés and transport services.

* Sun-drenched alfresco setting overlooking lush greenery

Price : \$ 1,500,000

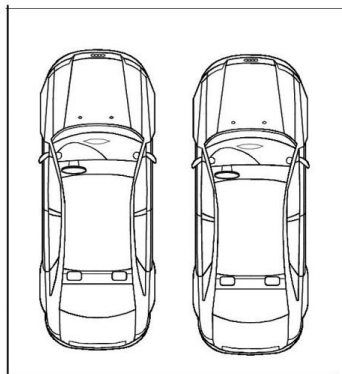
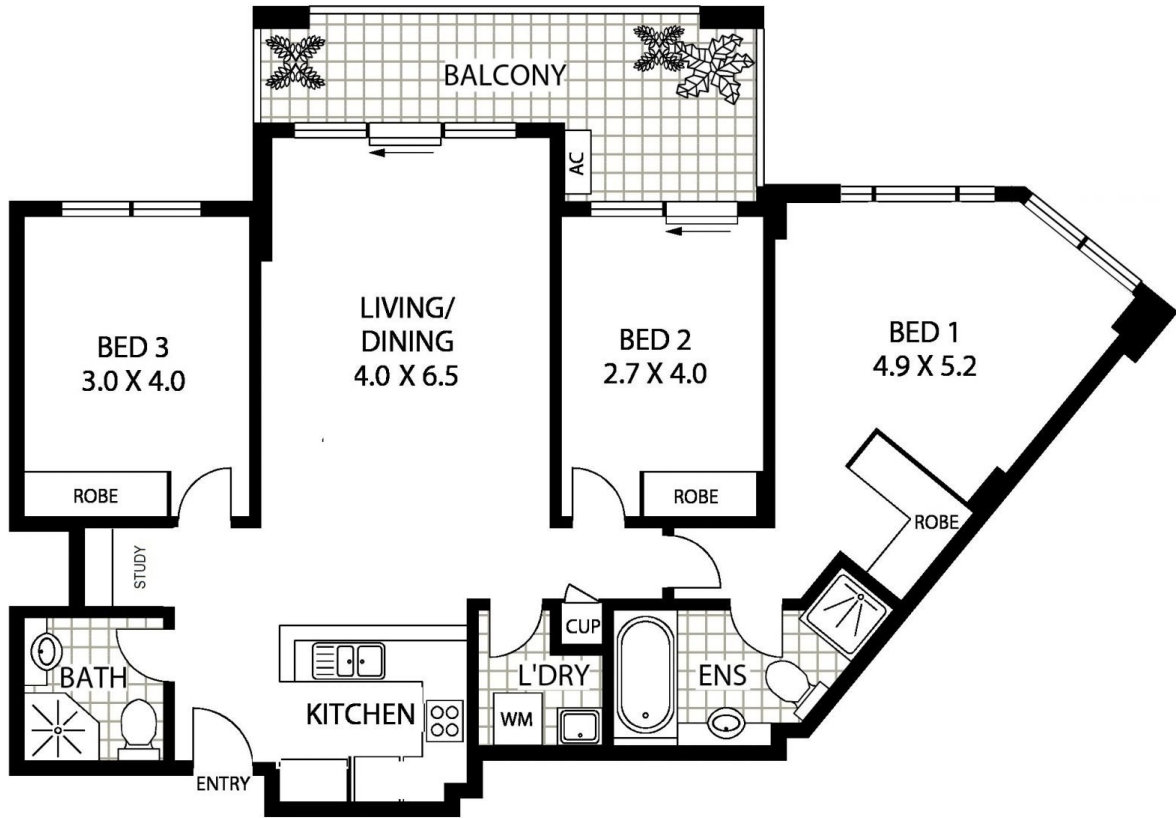
View : <https://www.landmarkrealtygroup.com.au/sale/nsw/inner-west/chiswick/residential/apartment/7375303>



Lee Chan
02 8221 8819



Eric Chan
02 8221 8819



SECURE PARKING



INTERNAL AREA :- 110 SQM (INCLUDING BALCONY)
 TOTAL AREA :- 143 SQM (INCLUDING 2 SECURE PARKING)

117/1 Manta Place

CHISWICK



Floor Plan Disclaimer: Mind the Gap (mtg) floor plans / site plans are intended as an approximate guide only. No representations or warranties of any nature are given or intended and any person using this information other than as a guide should always rely on their own enquiries. Mind the Gap property marketing services / 1300 133 145 / Photography, Floor plans, Copywriting, Video, Online, Design / www.mindthegap.com.au