



### 30/1 Janoa Place Chiswick NSW

2  2  1 

Nestled in a peaceful park-side position this stunning apartment showcases stylish open-plan interiors flooded with natural light. Tastefully renovated throughout, it is immaculately presented and offers sophisticated resort style living.

A perfect blend of contemporary living in a great lifestyle location, this apartment is enviably located in the prestigious Nautica Waterfront Estate on the stunning shores of Abbotsford Bay and surrounded by beautifully manicured gardens. Positioned for the utmost convenience, easy stroll to bayside parks, shops, cafés and transport services.

- \* Sun-drenched alfresco setting overlooking park views, North-East facing
- \* Spacious, light-filled living and dining room flows to

**Price** : \$ 1,200,000

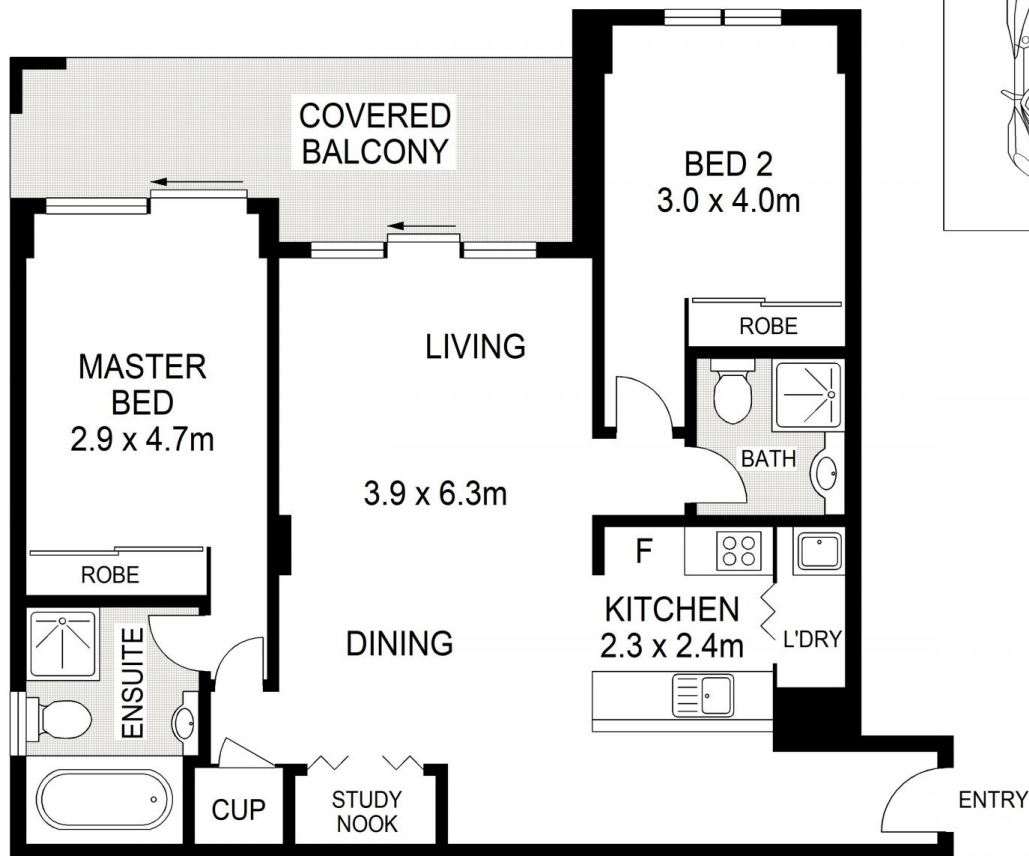
**View** : <https://www.landmarkrealtygroup.com.au/sale/nsw/inner-west/chiswick/residential/apartment/7569915>



**Lee Chan**  
02 8221 8819



**Eric Chan**  
02 8221 8819



**30/1 JANOA PLACE**

**CHISWICK**

AREA: 94 SQM (INCLUDES BALCONY)  
TOTAL: 115 SQM (INCLUDES CAR SPACE)



Scale in metres indicative only. Dimensions are approximate. All information contained herein is gathered from sources we believe to be reliable. However we cannot guarantee its accuracy and interested persons should rely on their own enquiries.