



18/2 Bechert Road Chiswick NSW

2  2  2 

A sanctuary of style and sophistication, this premier top floor apartment has been intuitively designed to create a stunning, airy and light-filled living space. Seamless flow from the open-plan living areas to a spacious North facing entertaining terrace, offering an enviable lifestyle of indoor/outdoor living to come home and enjoy.

Price : \$ 1,180,000

View : <https://www.landmarkrealtygroup.com.au/sale/nsw/inner-west/chiswick/residential/apartment/7593453>

Located in the prestigious Nautica Waterfront Estate on the stunning shores of Abbotsford Bay and surrounded by beautifully manicured gardens. Positioned for the utmost convenience, easy stroll to bayside parks, shops, cafés and transport services.

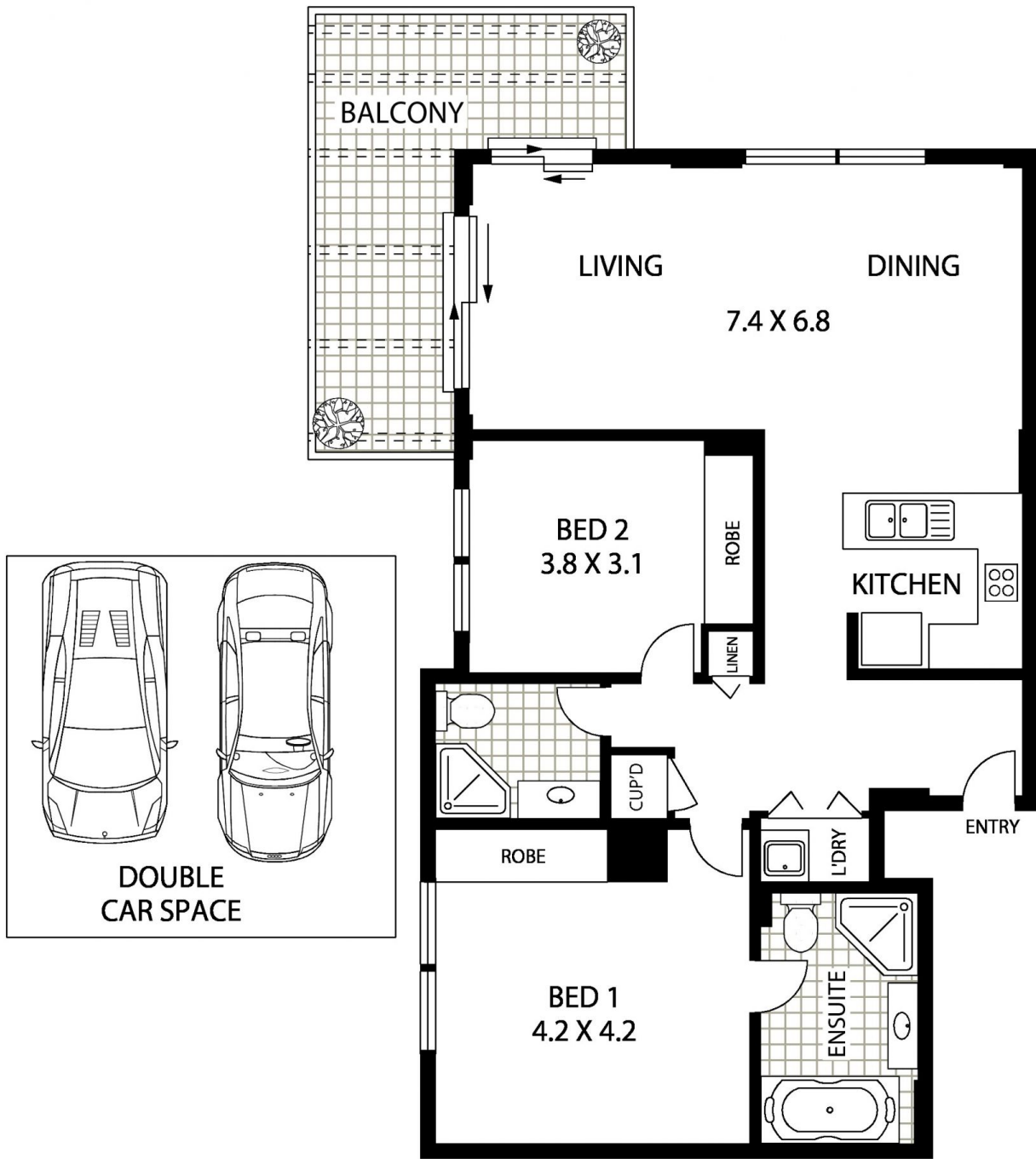
- * Expansive North facing entertaining terrace, park views
- * Beautifully presented open plan living and dining area, abundance of natural light
- * Sleek stone kitchen; S/S appliances, oven, gas cooktop,



Lee Chan
02 8221 8819



Eric Chan
02 8221 8819



LEVEL FOUR



18/2 BECHERT ROAD

INTERNAL AREA :- 102 SQM (INCLUDING BALCONY)
 TOTAL AREA :- 135 SQM (INCLUDING DOUBLE CAR SPACE)

CHISWICK



Floor Plan Disclaimer: Mind the Gap (mtg) floor plans / site plans are intended as an approximate guide only. No representations or warranties of any nature are given or intended and any person using this information other than as a guide should always rely on their own enquiries. Mind the Gap property marketing services / 1300 133 145 / Photography, Floor plans, Copywriting, Video, Online, Design / www.mindthegap.com.au