



### 161/4 Dolphin Close Chiswick NSW

1  1  1 

Enjoying a private elevated position, this spacious one bedroom apartment promises easy-care living in an unbeatable lifestyle location. Offering light-filled interiors with welcoming open plan living and dining spaces and enjoying a leafy outlook from all rooms flooded with Easterly light.

Nestled in the enviable Riviera Waterfront development, offering a magnificent lifestyle with full resort facilities and positioned for the utmost convenience, easy stroll to bayside parks, shops, cafés and transport services.

- \* Spacious light-filled living and dining area spills to outside
- \* Covered balcony with leafy outlook ideal for alfresco entertaining
- \* Queen sized bedroom with built-in wardrobe
- \* Modern kitchen with stone bench and S/S appliances.

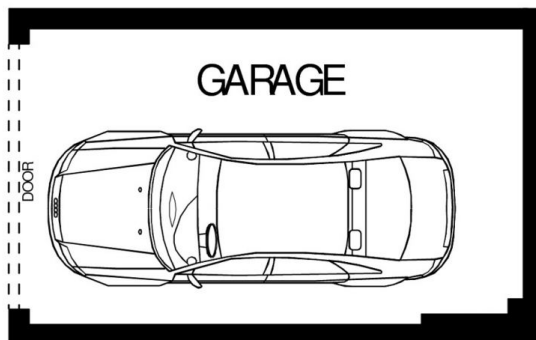
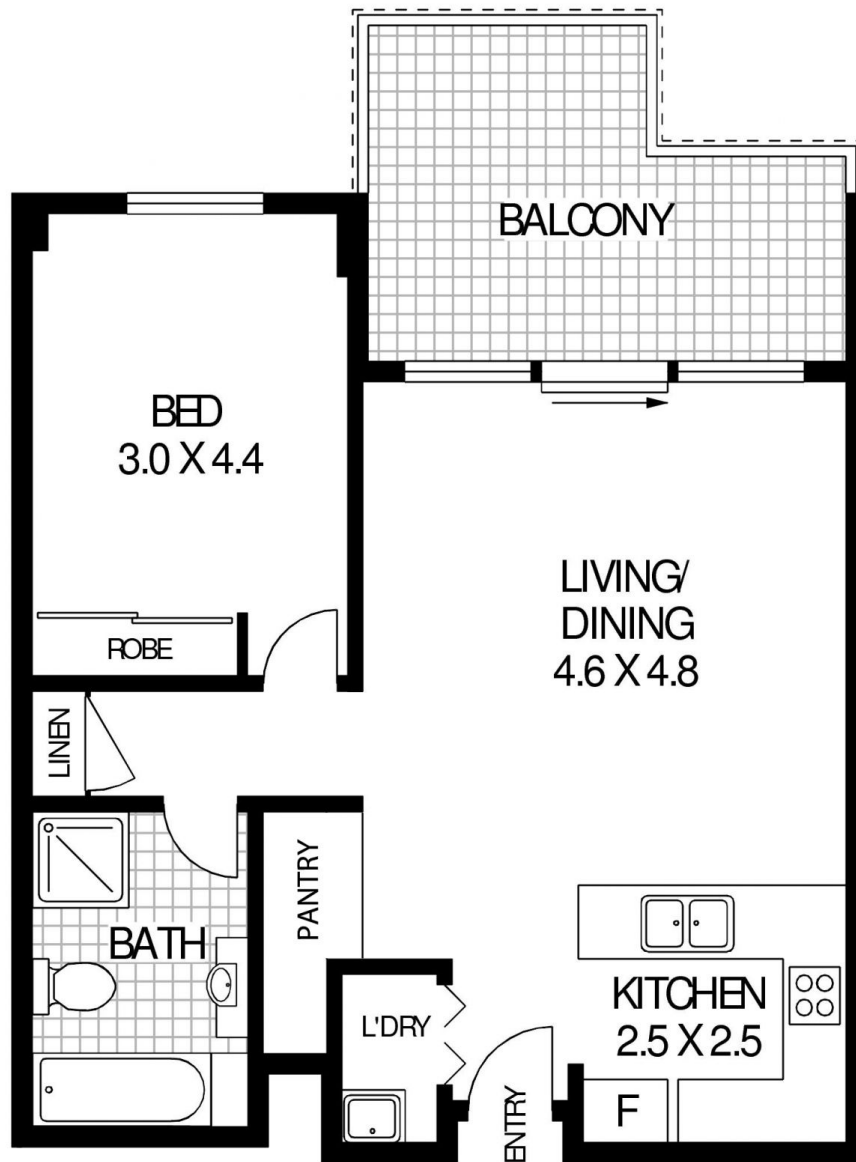
**View :** <https://www.landmarkrealtygroup.com.au/sale/nsw/inner-west/chiswick/residential/apartment/7644758>



**Eric Chan**  
02 8221 8819



**Lee Chan**  
02 8221 8819



INTERNAL AREA:- 65sqm (including balcony)  
TOTAL AREA:- 79 sqm (including garage)



**161/4 DOLPHIN CLOSE**

**CHISWICK**



**Floor Plan Disclaimer:** Mind the Gap (mtg) floor plans/ site plans are intended as an approximate guide only. No representations or warranties of any nature are given or intended and any person using this information other than as a guide should always rely on their own enquiries. Mind the Gap property marketing services/ 1300 133 145 / Photography, Floor plans, Copywriting, Video, Design / [www.mindthegap.com.au](http://www.mindthegap.com.au)