






**18/2 Bechert Road Chiswick NSW**

2  2  2 

A sanctuary of style and sophistication, this premier top floor apartment has been intuitively designed to create a stunning, airy and light-filled living space. Seamless flow from the open-plan living areas to a spacious North facing entertaining terrace, offering an enviable lifestyle of indoor/outdoor living to come home and enjoy.

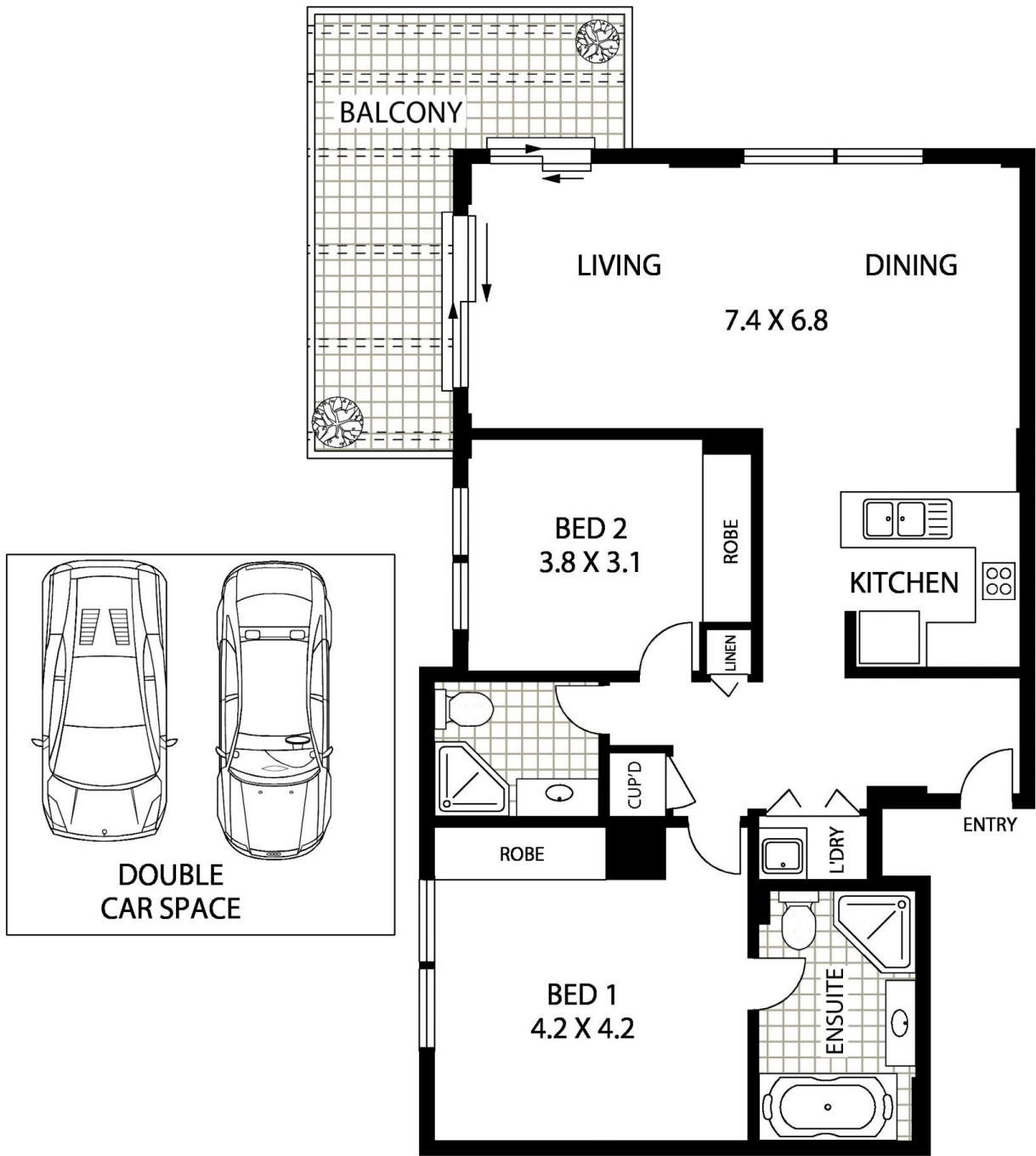
**View** : <https://www.landmarkrealtygroup.com.au/lease/nsw/inner-west/chiswick/residential/apartment/7709721>

Located in the prestigious Nautica Waterfront Estate on the stunning shores of Abbotsford Bay and surrounded by beautifully manicured gardens. Positioned for the utmost convenience, easy stroll to bayside parks, shops, cafés and transport services.



**Eric Chan**  
02 8221 8819

- \* Furniture included: Entertainment unit, fridge, washing machine
- \* Expansive North facing entertaining terrace, park views



**LEVEL FOUR**



**18/2 BECHERT ROAD**

INTERNAL AREA :- 102 SQM (INCLUDING BALCONY)  
 TOTAL AREA :- 135 SQM (INCLUDING DOUBLE CAR SPACE)

**CHISWICK**



**Floor Plan Disclaimer:** Mind the Gap (mtg) floor plans / site plans are intended as an approximate guide only. No representations or warranties of any nature are given or intended and any person using this information other than as a guide should always rely on their own enquiries. Mind the Gap property marketing services / 1300 133 145 / Photography, Floor plans, Copywriting, Video, Online, Design / www.mindthegap.com.au