



167/4 Dolphin Close Chiswick NSW

1  1  1 

Occupying a prized ground floor position, this stunning apartment is a haven of style, light and space. Bathed in natural light from its desirable Northerly aspect, it offers stylish light-filled interiors and a spacious alfresco setting perfect for year-round entertaining. Combining the luxuries of low maintenance living in an excellent lifestyle location, it is the perfect retreat to come home and enjoy.

Nestled in the enviable Riviera Waterfront development, offering a magnificent lifestyle with full resort facilities and positioned for the utmost convenience, easy stroll to bayside parks, shops, cafés and transport services.

- * Sun-drenched covered courtyard perfect for year-round entertaining, Northerly facing
- * Spacious light-filled living & dining area, built-in entertainment unit

Price : \$ 840,000

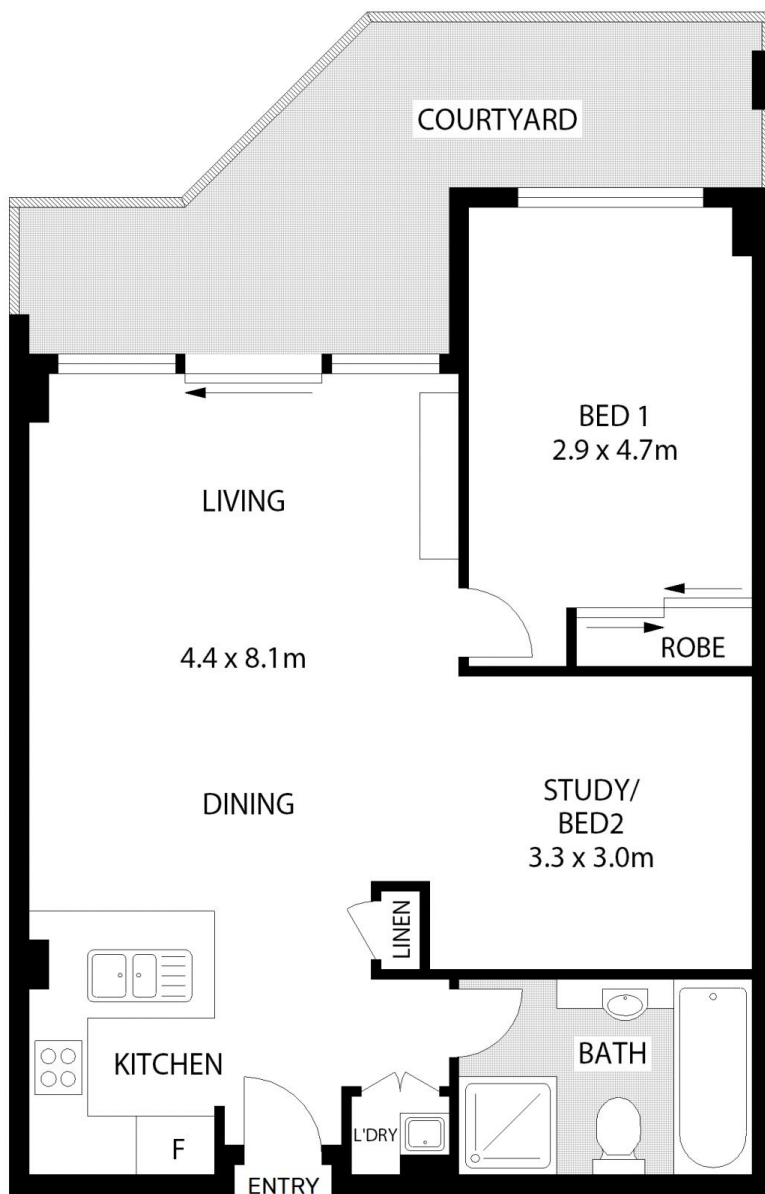
View : <https://www.landmarkrealtygroup.com.au/sale/nsw/inner-west/chiswick/residential/apartment/7761913>



Lee Chan
02 8221 8819

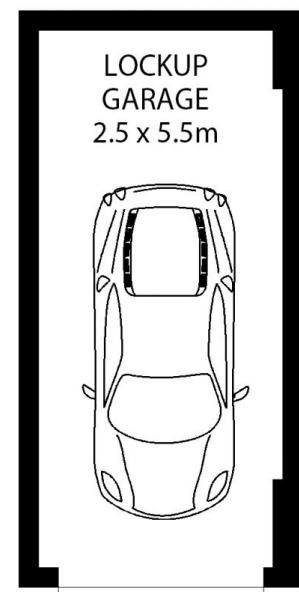


Eric Chan
02 8221 8819



GROUND FLOOR

STORAGE CAGE
2 SQM



BASEMENT



167/4 DOLPHIN CLOSE

CHISWICK

Scale in metres. Indicative only. Dimensions are approximate. All information contained herein is gathered from sources we believe to be reliable. However we cannot guarantee its accuracy and interested persons should rely on their own enquiries.



INTERNAL AREA:- 79 SQM (INCLUDING COURTYARD)
TOTAL AREA: - 95 SQM (INCLUDING GARAGE & STORAGE)