



**239/4 Bechert Road Chiswick NSW**

2  2  2 

Set on a desirable corner ground floor position, this beautifully presented two-bedroom apartment offers an abundance of indoor and outdoor entertaining space, with light-filled open plan living spaces leading out onto a private entertainer's terrace.

**Price** : \$ 1,180,000

**View** : <https://www.landmarkrealtygroup.com.au/sale/nsw/inner-west/chiswick/residential/apartment/7774184>

Nestled in the enviable Riviera Waterfront development, offering a magnificent lifestyle with full resort facilities and positioned for the utmost convenience, easy stroll to bayside parks, shops, cafés and transport services.

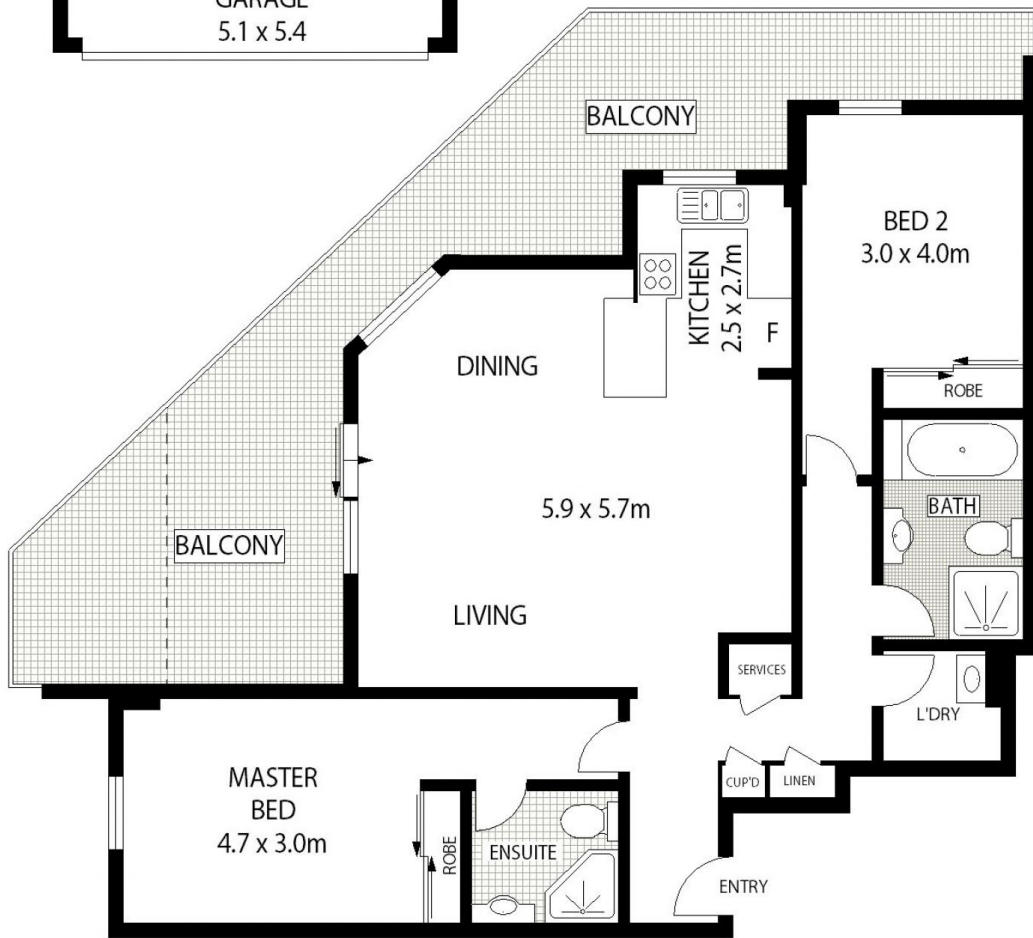
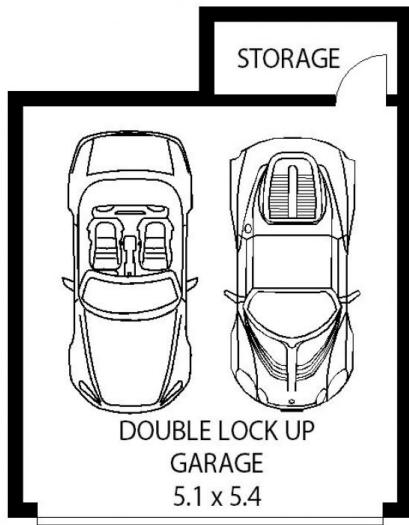
- \* Covered terrace for year-round entertaining, privacy awning
- \* Stylish, light-filled living & dining room flows out to private alfresco setting
- \* Sleek stone kitchen; S/S appliances, gas cook top, oven, dishwasher



**Lee Chan**  
02 8221 8819



**Eric Chan**  
02 8221 8819



AREA: 123 SQM (INCLUDING BALCONY)  
TOTAL:- 154 SQM (INCLUDING GARAGE & STORAGE)

239/4 BECHERT ROAD

CHISWICK



Scale in metres indicative only. Dimensions are approximate. All information contained herein is gathered from sources we believe to be reliable. However we cannot guarantee its accuracy and interested persons should rely on their own enquiries.