



**5 Hordern Avenue Petersham NSW**

2  1  1 

Peacefully tucked away in a quiet cul-de-sac, this charming character home presents a tranquil living experience in a sought-after locale. Boasting an expansive rear yard with a sunny North to rear aspect, lined with lush gardens and well-proportioned throughout, it offers spacious living and dining spaces. Conveniently located within walking distance to local amenities, walk to Norton Street village, shops, cafés, local parks, Petersham Station and city bus services.

**Price** : Contact Agent  
**Land Size** : 323 sqm  
**View** : <https://www.landmarkrealtygroup.com.au/sale/nsw/inner-west/petersham/residential/house/7777605>

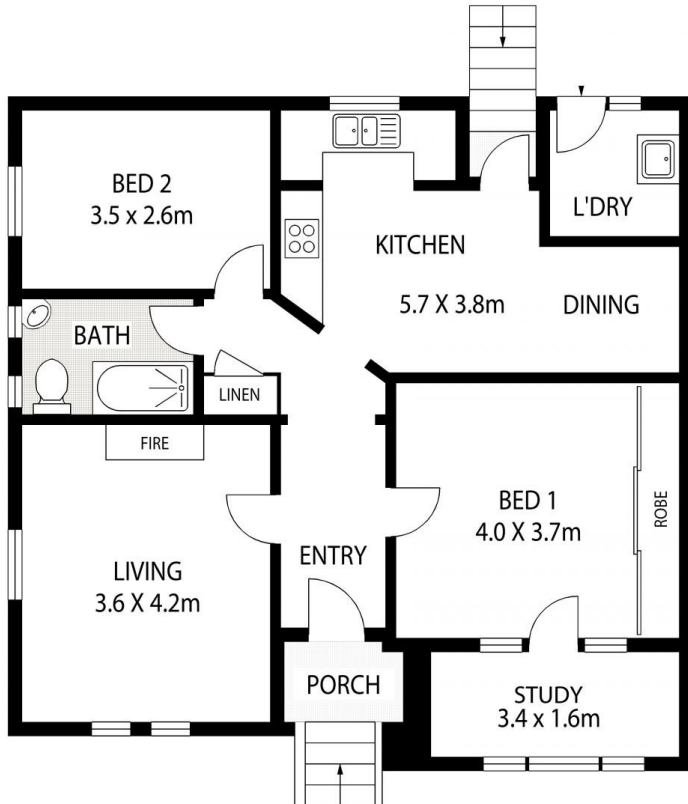
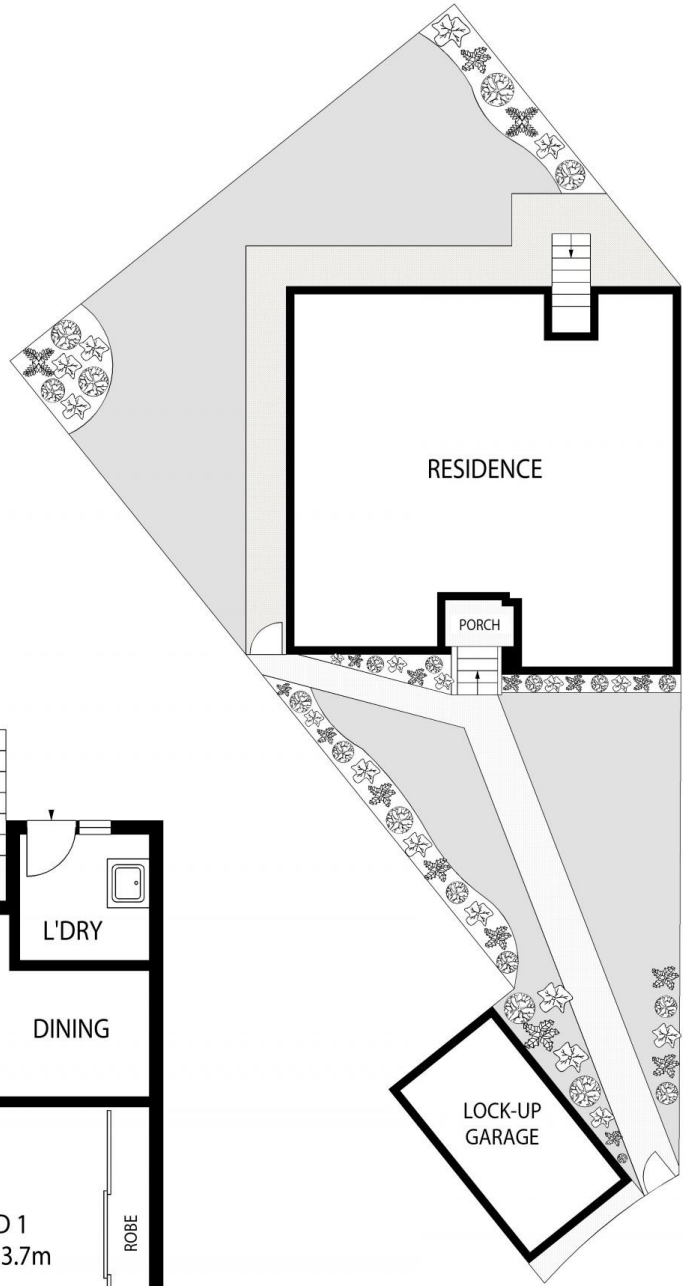
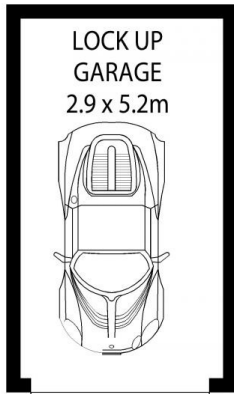
- \* Quietly positioned at the end of a cul-de-sac, tree lined street
- \* Captivating alfresco backyard perfect for year-round entertaining
- \* Spacious, light-filled formal lounge with ornamental fireplace
- \* Gourmet kitchen, separate dining, high ceilings,



**Lee Chan**  
02 8221 8819



**Eric Chan**  
02 8221 8819



**5 HORDERN AVENUE**

**PETERSHAM**

Land size:- 323 SQM

Scale in metres indicative only. Dimensions are approximate. All information contained herein is gathered from sources we believe to be reliable. However we cannot guarantee its accuracy and interested persons should rely on their own enquiries.

