

**12/101 Wentworth Road Strathfield NSW**

**2  1  1 **

Revelling in a quiet position set back from the road, this double-brick residence delivers on style, light, space and convenience. Discover an expansive floor plan with large living and dining areas and a flawless indoor/outdoor flow. Its sophisticated interiors are matched with a coveted East facing bringing an abundance of natural light. Located in a premier setting, just a short stroll to Burwood and Strathfield village hubs, local schools, shopping, restaurants and CBD bus and rail services.

**Price** : \$ 882,000

**View** : <https://www.landmarkrealtygroup.com.au/sale/nsw/inner-west/strathfield/residential/apartment/7784227>

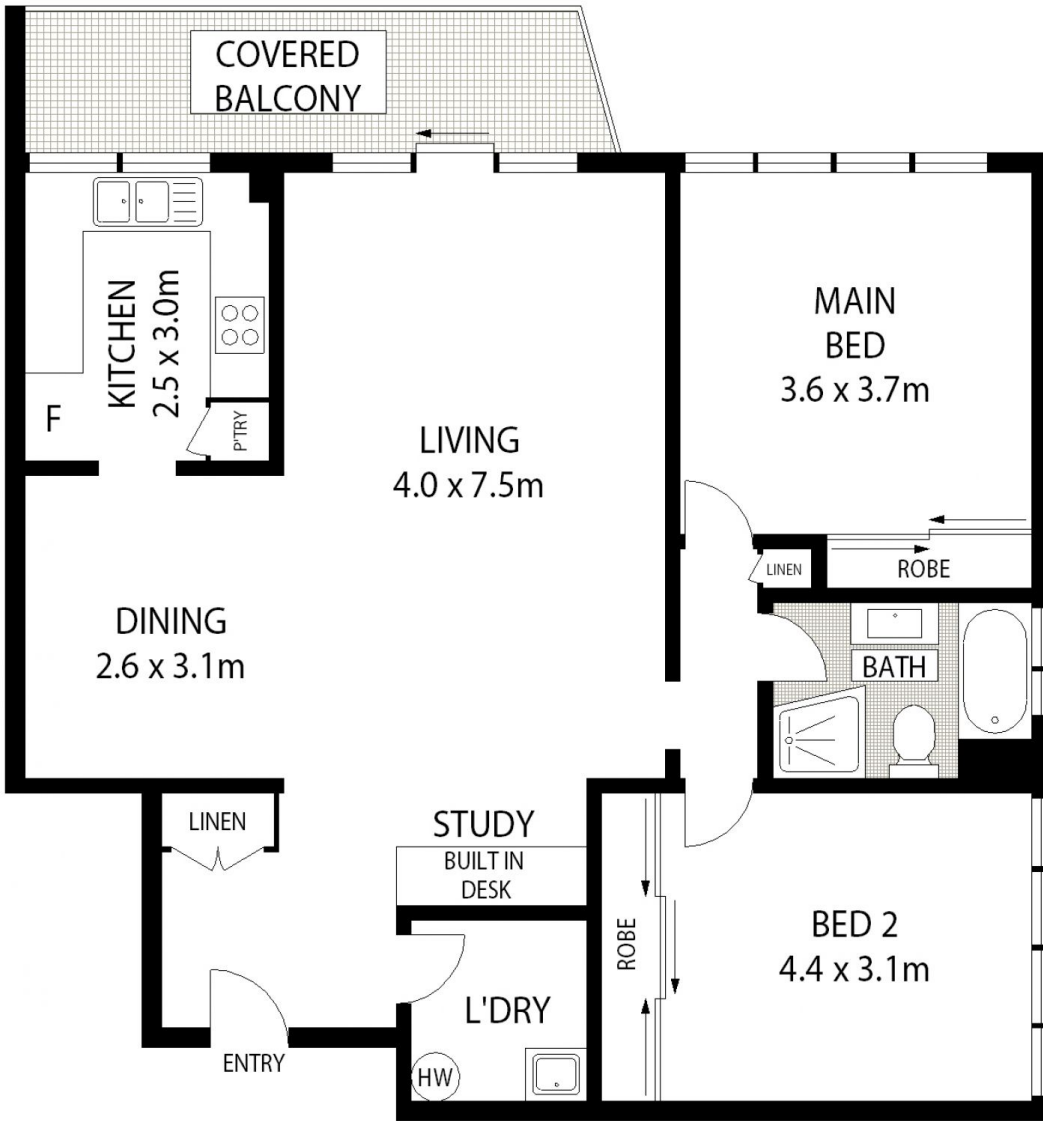
- \* Double-brick building, sunny East facing, tree-line vistas
- \* Expansive living space with separate dining, opens to covered alfresco
- \* Private sun-soaked covered balcony for year-round entertaining
- \* Study area with custom built-in cabinetry and fold-out desk



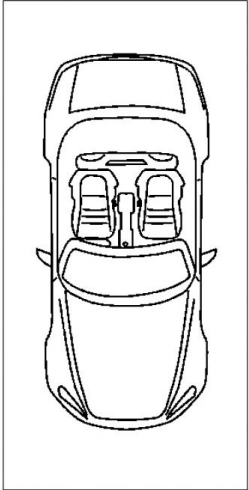
**Lee Chan**  
02 8221 8819



**Eric Chan**  
02 8221 8819



STORAGE  
4 SQM



SECURE  
UNDER  
COVER  
CAR SPACE



12/101 WENTWORTH ROAD

STRATHFIELD

AREA: 98 SQM (INCLUDES BALCONY)  
TOTAL: 118 SQM (INCLUDES CAR SPACE & STORAGE)

Scale in metres indicative only. Dimensions are approximate. All information contained herein is gathered from sources we believe to be reliable. However we cannot guarantee its accuracy and interested persons should rely on their own enquiries.

