






### 18 New England Drive Kingsgrove NSW

3  1  4 

Set in one of Kingsgrove's most esteemed streets, this immaculate single level family residence has been tastefully updated for spacious modern day living and entertaining. Showcasing a large level lawn and covered outdoor entertaining area, this versatile home offers seamless entertaining and is an ideal space for the young or growing family. Offering great potential to extend and further add value in the future and positioned with close proximity to local schools, parks, shops and transport.

- \* Set on a generous 538sqm block of land, solid double-brick home
- \* Single level layout, formal front lounge room with fireplace
- \* High ornate ceilings, flooring throughout, ducted air-conditioning
- \* Sleek modern kitchen with breakfast bar, new S/S

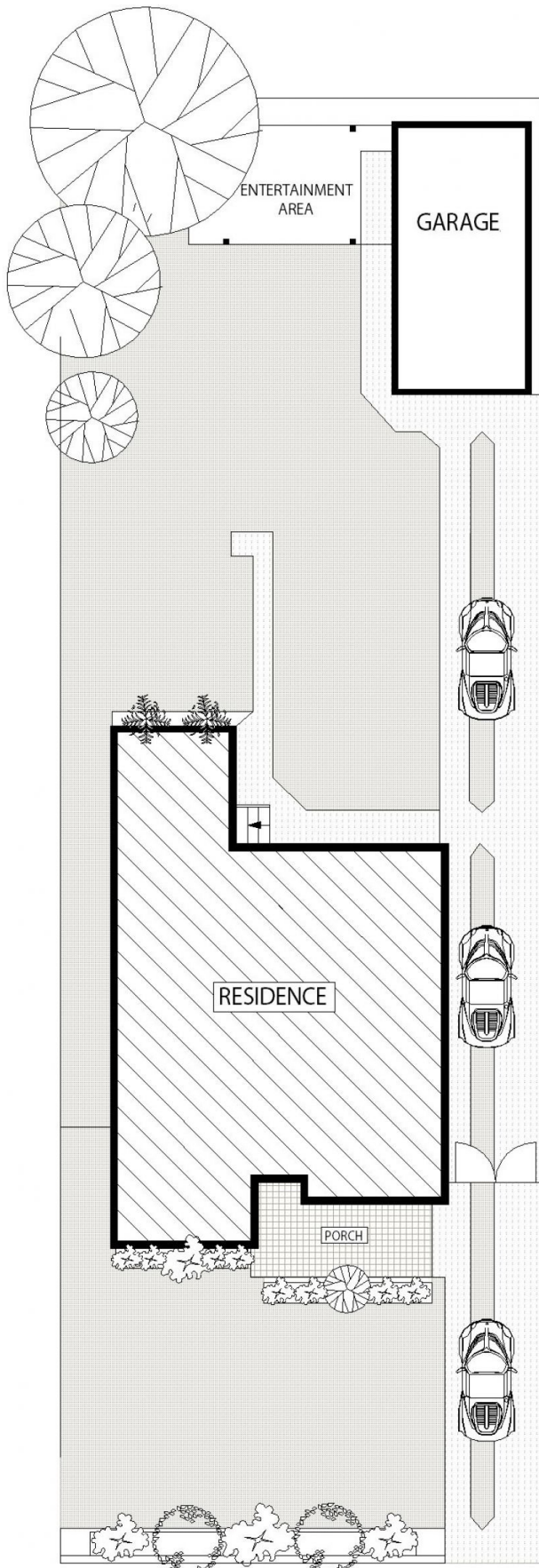
**Land Size** : 538 sqm  
**View** : <https://www.landmarkrealtygroup.com.au/sale/nsw/st-george/kingsgrove/residential/house/7793883>



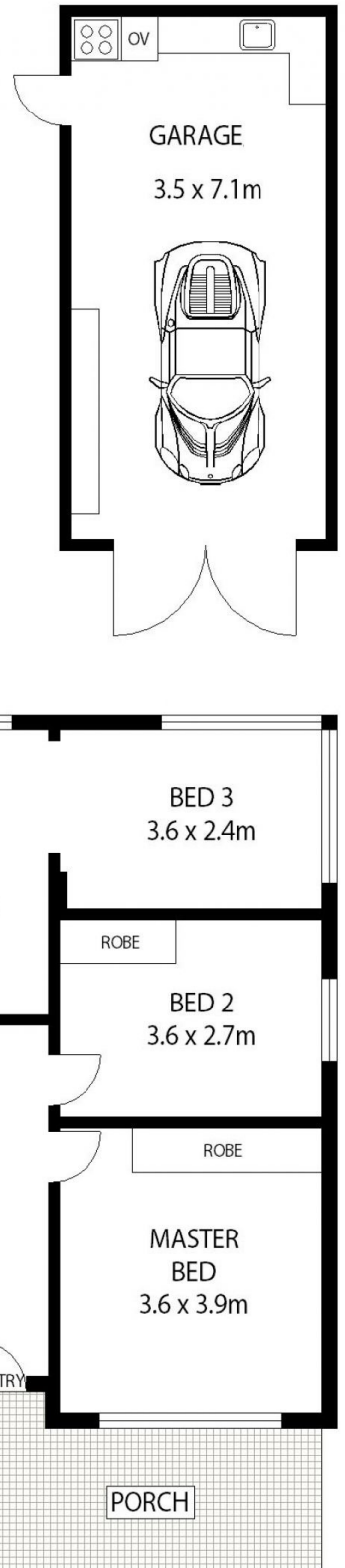
**Lee Chan**  
02 8221 8819



**Eric Chan**  
02 8221 8819



**SITE PLAN (NOT TO SCALE)**



LAND SIZE :- 543 SQM



**18 NEW ENGLAND DRIVE**

**KINGSGROVE**



Scale in metres indicative only. Dimensions are approximate. All information contained herein is gathered from sources we believe to be reliable. However we cannot guarantee its accuracy and interested persons should rely on their own enquiries.