



**208/4 Bechert Road Chiswick NSW**

2  2  2 

Occupying a prized ground floor position, this stunning two-bedroom apartment is a haven of designer style, light and space. Offering open plan light-filled interiors that blends seamlessly with a spacious alfresco setting, this is the perfect contemporary retreat to come home and enjoy.

**Price** : \$ 1,280,000

**View** : <https://www.landmarkrealtygroup.com.au/sale/nsw/inner-west/chiswick/residential/apartment/7800537>

Nestled in the enviable Riviera Waterfront development, offering a magnificent lifestyle with full resort facilities and positioned for the utmost convenience, easy stroll to bayside parks, shops, cafés and transport services.

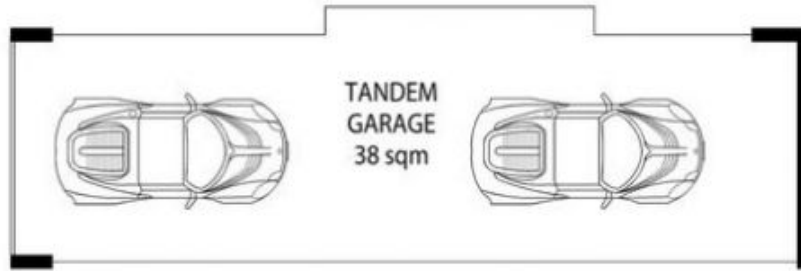
- \* Sun-drenched covered courtyard perfect for year-round entertaining, North-East facing
- \* Spacious light-filled living & dining seamlessly flows to alfresco setting, private gate access
- \* Sleek stone kitchen; Euro S/S appliances, gas cook top, oven, dishwasher, pantry cupboard



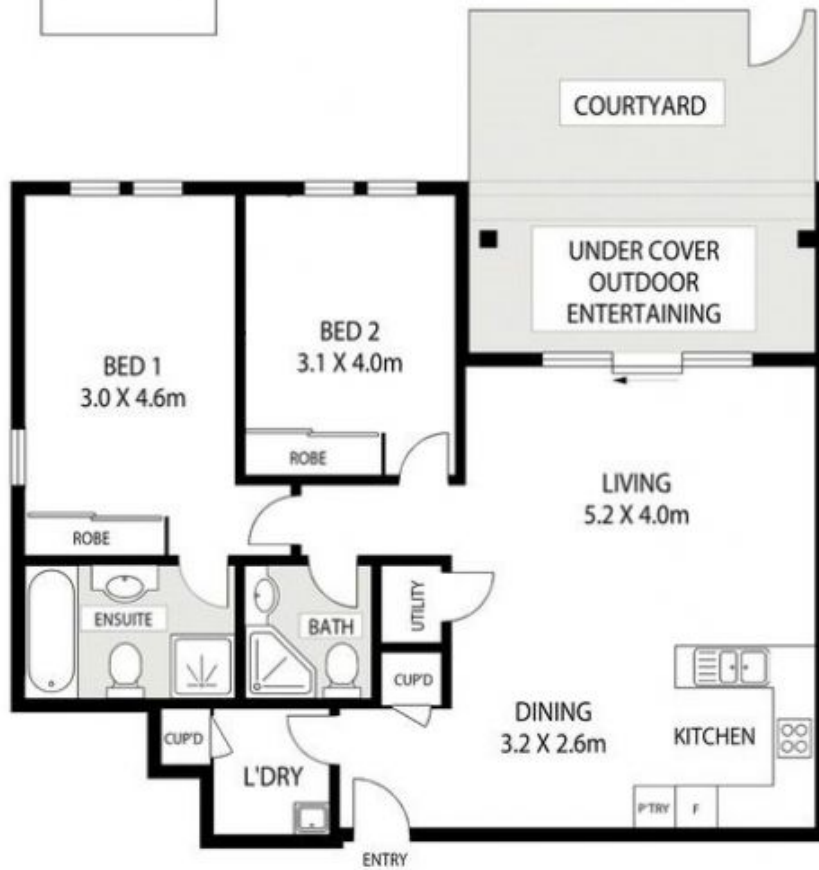
**Eric Chan**  
02 8221 8819



**Lee Chan**  
02 8221 8819



STORAGE  
2.5 X 2.2m



208/4 BECHERT ROAD

CHISWICK

AREA: 106 SQM (Including Courtyard)  
TOTAL: 149 SQM (Incl. LUG + Storage)



Scale in metres indicative only. Dimensions are approximate. All information contained herein is gathered from sources we believe to be reliable. However we cannot guarantee its accuracy and interested persons should rely on their own enquiries.