

115/13 Joynton Avenue Zetland NSW

2  2  1 

Located within the burgeoning Zetland precinct, this stylish, split level two bedroom + study apartment is brilliantly designed, offering open plan living and dining spaces with an abundance of natural light. Blessed with charm, character and superbly styled interiors, this home boasts a versatile floor plan ideal for low maintenance living and offers an undeniable inner-city lifestyle.

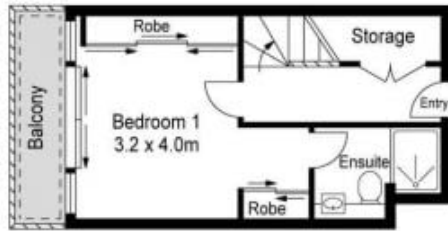
View : <https://www.landmarkrealtygroup.com.au/lease/nsw/eastern-suburbs/zetland/residential/apartment/7842032>

Enjoy the proximity to local parks, East Village shopping centre, popular boutiques, cafés, restaurants, schools and city transport services.

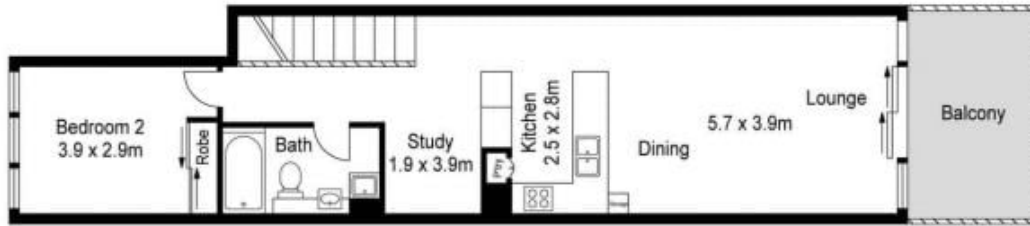
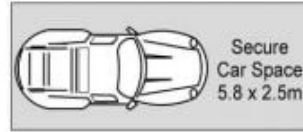
- * Bright and airy open plan living and dining space
- * Private alfresco setting for year-round entertaining
- * Separate study area ideal for home office, under stair storage space
- * Sleek stone kitchen, Stainless Steel appliances, gas



Eric Chan
02 8221 8819



Entry Level



Level One



115/13 Joynton Avenue, Zetland

PLANS SHOWN ONLY INDICATIVE OF LAYOUT. DIMENSIONS ARE APPROXIMATE.
Ref. No. 43979