



189/4 Dolphin Close Chiswick NSW

1  1  1 

Enjoying a private elevated position, this spacious one-bedroom apartment offers an exceptional lifestyle of low-maintenance living in mind, with stylish free-flowing interiors seamlessly embraced by the sunny Northerly light and enjoying a leafy outlook.

View : <https://www.landmarkrealtygroup.com.au/lease/nsw/inner-west/chiswick/residential/apartment/7868427>

Nestled in the enviable Riviera Waterfront development, offering a magnificent lifestyle with full resort facilities and positioned for the utmost convenience, easy stroll to bayside parks, shops, cafes and transport services.

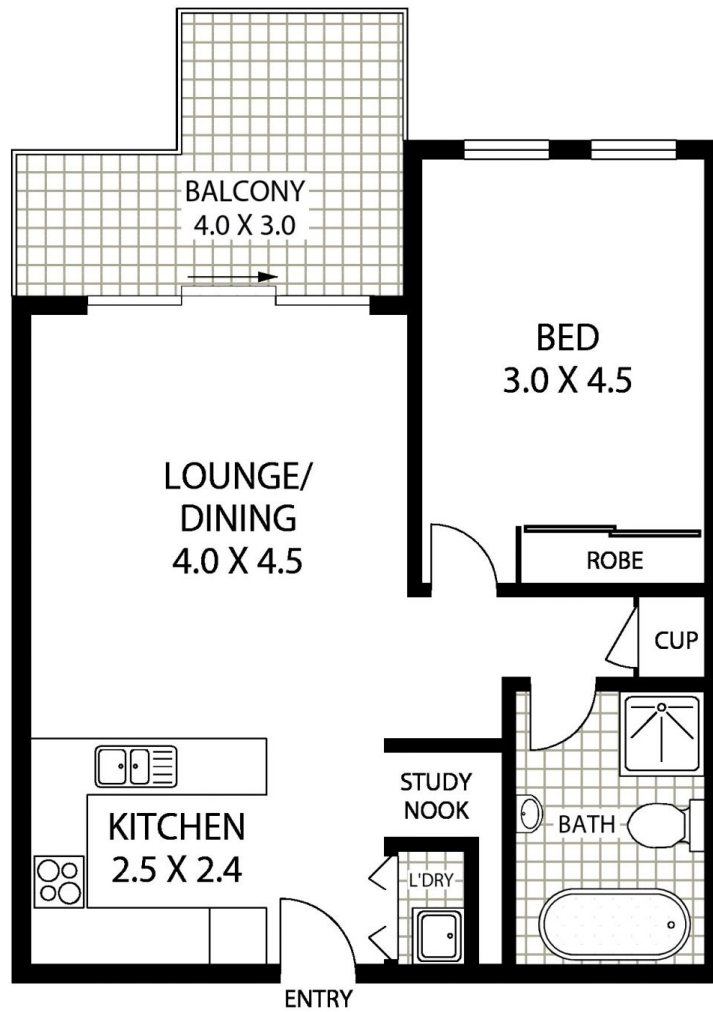
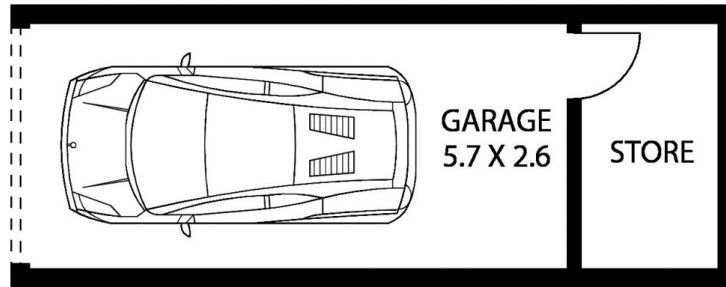
* Desirable elevated position, sunny Northerly aspect, leafy outlook

* Open plan, light-filled living & dining room spills out to spacious balcony

* Sleek stone kitchen: S/S appliances, gas cooktop, oven, dishwasher



Eric Chan
02 8221 8819



INTERNAL AREA:- 64 SQM (INCLUDING BALCONY)
TOTAL AREA:- 83 SQM (INCLUDING GARAGE & STORAGE)



189/4 DOLPHIN CRESCENT

CHISWICK



Floor Plan Disclaimer: MTG Media floor plans / site plans are intended as an approximate guide only. No representations or warranties of any nature are given or intended and any person or company using this information other than as a guide should always rely on their own enquiries. MTG Media marketing services - 1300 133 145 - Photography, Floor plans, Copywriting, Video, Drone - www.mtgmedia.com.au