



25/1 Janoa Place Chiswick NSW

3  2  2 

Enjoying a premier ground-floor position, this outstanding light-filled townhouse style apartment showcases spacious, beautifully presented interiors and an expansive sun-drenched alfresco setting. Immediately impressive in space and designer style, it offers ultra-contemporary living in a resort-style setting.

Price : \$ 1,600,000
View : <https://www.landmarkrealtygroup.com.au/sale/nsw/inner-west/chiswick/residential/apartment/7873670>

Enviably located in the prestigious Nautica Waterfront Estate on the stunning shores of Abbotsford Bay and surrounded by beautifully manicured gardens. Positioned for the utmost convenience, easy stroll to bayside parks, shops, cafés and transport services.

- * Expansive entertainer's courtyard with private gate access and awning
- * Spacious light-filled living & dining that flows to N/E facing alfresco setting

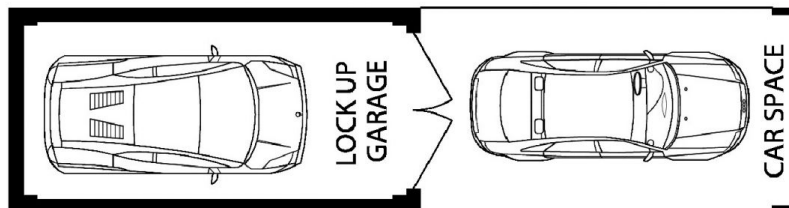
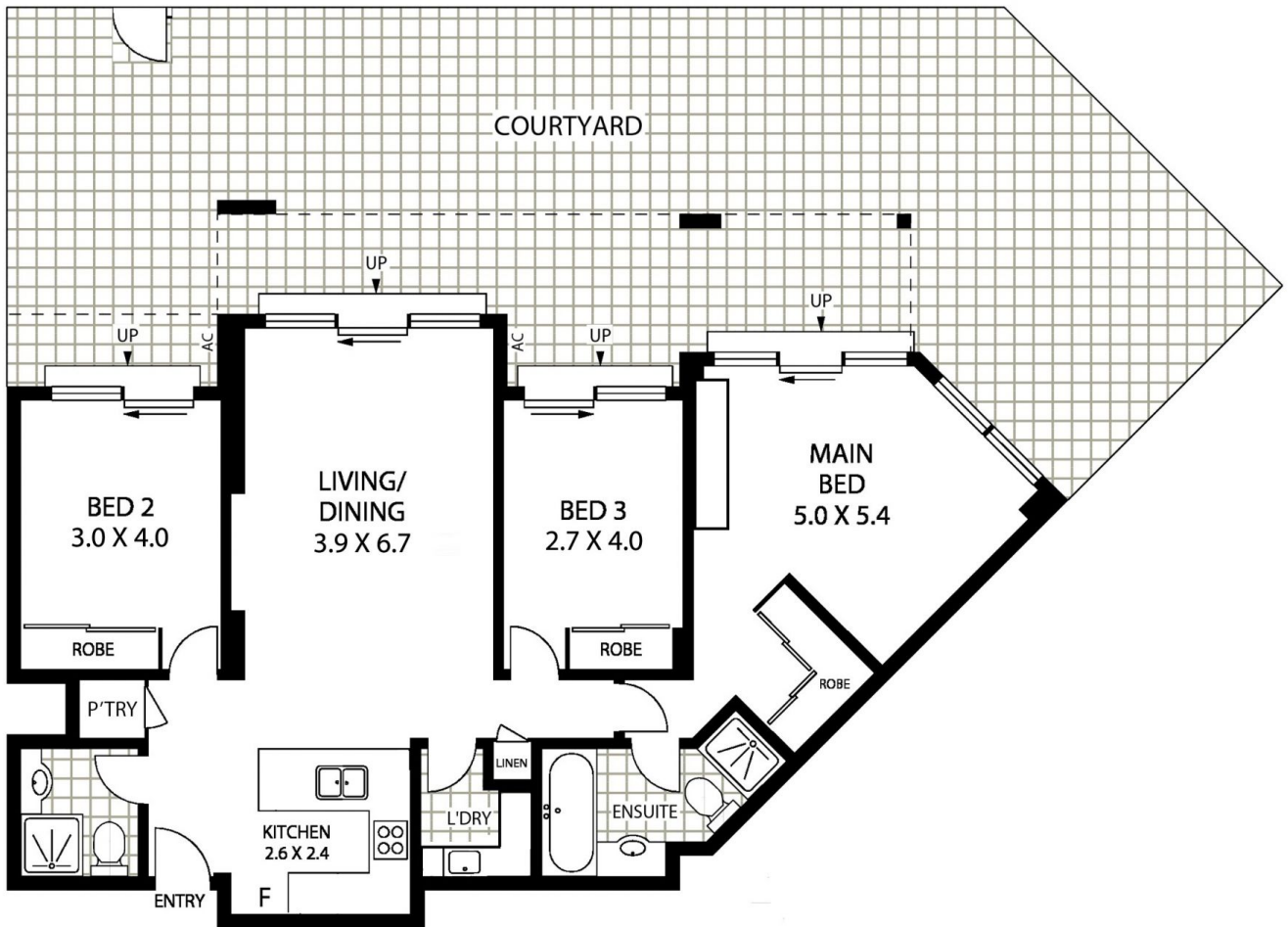


Lee Chan
02 8221 8819



Eric Chan
02 8221 8819

ACCESS TO PARK



INTERNAL AREA:- 176 SQM (including courtyard)
TOTAL AREA:- 206 SQM (including car)



25/1 JANOA PLACE

CHISWICK



Floor Plan Disclaimer: Mind the Gap (mtg) floor plans / site plans are intended as an approximate guide only. No representations or warranties of any nature are given or intended and any person using this information other than as a guide should always rely on their own enquiries. Mind the Gap property marketing services / 1300 133 145 / Photography, Floor plans, Copywriting, Video, Online, Design / www.mindthegap.com.au