



232/4 Bechert Road Chiswick NSW

2  2  1 

Enjoying a coveted top floor position, this stunning 2-bedroom contemporary apartment is a light-filled haven of relaxed sophistication. Architecturally created with a clever use of light and space, this apartment enjoys spacious airy interiors and has been tastefully updated to provide an effortless lifestyle of contemporary luxury.

Providing a great sense of privacy, this apartment occupies a top-floor corner position with only one common wall. Nestled in the enviable Riviera Waterfront development, offering a magnificent lifestyle with full resort facilities and positioned for the utmost convenience, easy stroll to bayside parks, shops, cafés and transport services.

- * Large sundrenched covered balcony with leafy outlook
- * Top floor corner position, vaulted ceilings, abundance of natural light

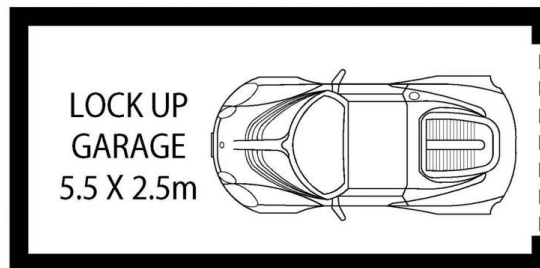
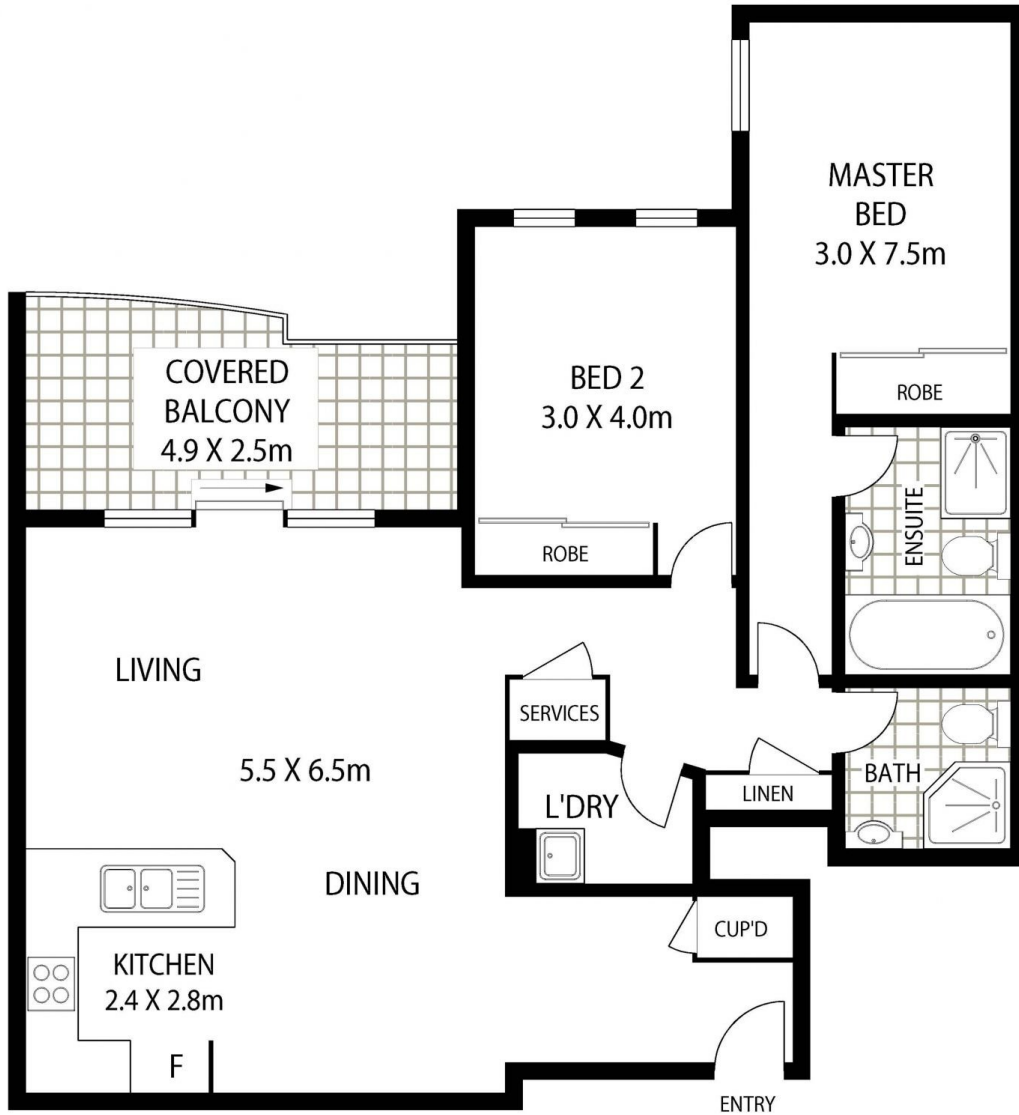
View : <https://www.landmarkrealtygroup.com.au/sale/nsw/inner-west/chiswick/residential/apartment/7911452>



Eric Chan
02 8221 8819



Lee Chan
02 8221 8819



AREA:- 101 SQM (INCLUDING BALCONY)
 TOTAL AREA:- 115 SQM (INCLUDING GARAGE)

232/4 BECHERT ROAD

CHISWICK



Scale in metres indicative only. Dimensions are approximate. All information contained herein is gathered from sources we believe to be reliable. However we cannot guarantee its accuracy and interested persons should rely on their own enquiries.