



269/4 Bechert Road Chiswick NSW

1  1  1 

A relaxing haven with effortlessly stylish, designer interiors and inviting al fresco entertaining, this executive 1-bedroom + study apartment creates an immediate impression of light and space.

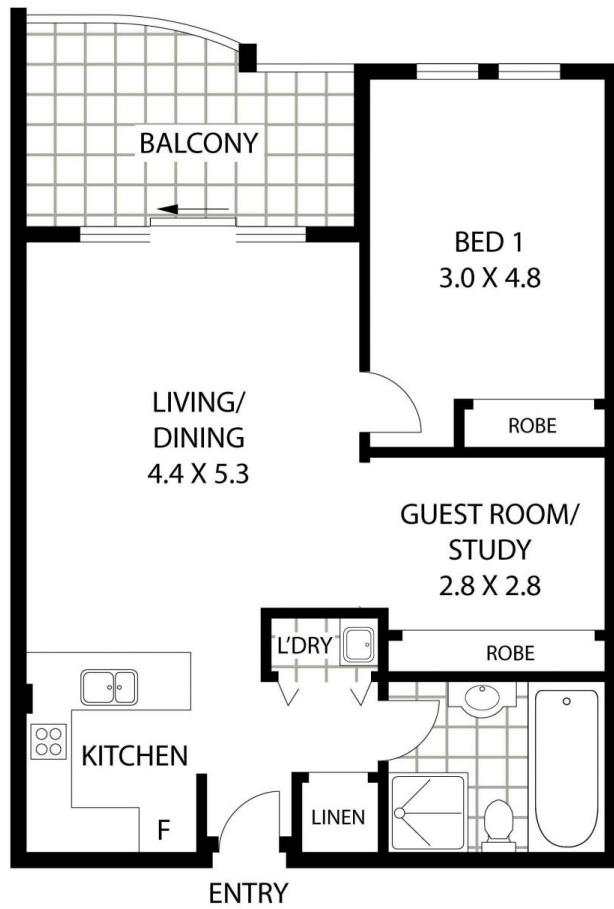
View : <https://www.landmarkrealtygroup.com.au/lease/sw/inner-west/chiswick/residential/apartment/7918576>

Nestled in the enviable Riviera Waterfront development, offering a magnificent lifestyle with full resort facilities and positioned for the utmost convenience, easy stroll to bayside parks, shops, cafés and transport services.

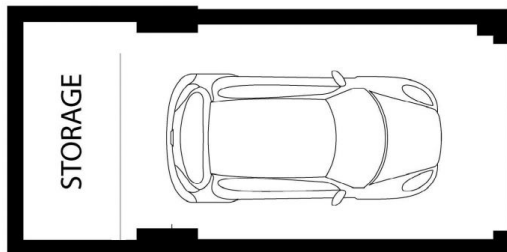
- * Spacious living and dining with vaulted ceilings flooded with natural light
- * Separate study area with built-ins, ideal for home office or guest area.
- * Large bedroom with built-in robes and ceiling fan, flooring throughout
- * Sleek stone kitchen with breakfast bar and S/S



Eric Chan
02 8221 8819



LOCK UP GARAGE



FLOOR AREA: 73 SQM (INCLUDING BALCONY)
TOTAL AREA: 91 SQM (INCLUDING LUG & STORAGE)

269/4 Bechert Road

Chiswick

FloorPlanDisclaimer: Mind the Gap (mtg) floor plans / site plans are intended as an approximate guide only. No representations or warranties of any nature are given or intended and any person using this information other than as a guide should always rely on their own enquiries. Mind the Gap property marketing services/ 1300 133 145 / Photography, Floor plans, Copywriting, Video, Online, Design / www.mindthegap.com.au

