






145/1 Beresford Road Strathfield NSW

2  2  2 

Set within the desirable Strathbelle development, this stylish two-bedroom apartment showcases spacious light-filled interiors and generous proportions, thoughtfully designed, the internals seamlessly flow to the alfresco via floor-ceiling glass doors. Promising to deliver an exceptional retreat in a great lifestyle location, walk to Strathfield village, local shops, schools, restaurants and transport services.

Type : Apartment
Price : \$ 785,000
View : <https://www.landmarkrealtygroup.com.au/sale/nsw/inner-west/strathfield/residential/apartment/7931967>

- * Light-filled open plan living and dining leads out to alfresco
- * Sundrenched covered balcony with district views, North-East facing
- * Sleek stone kitchen, S/S appliances, gas cook top and oven, dishwasher

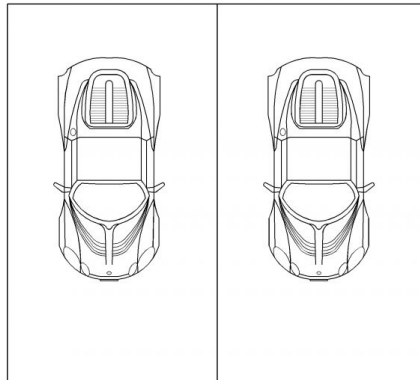
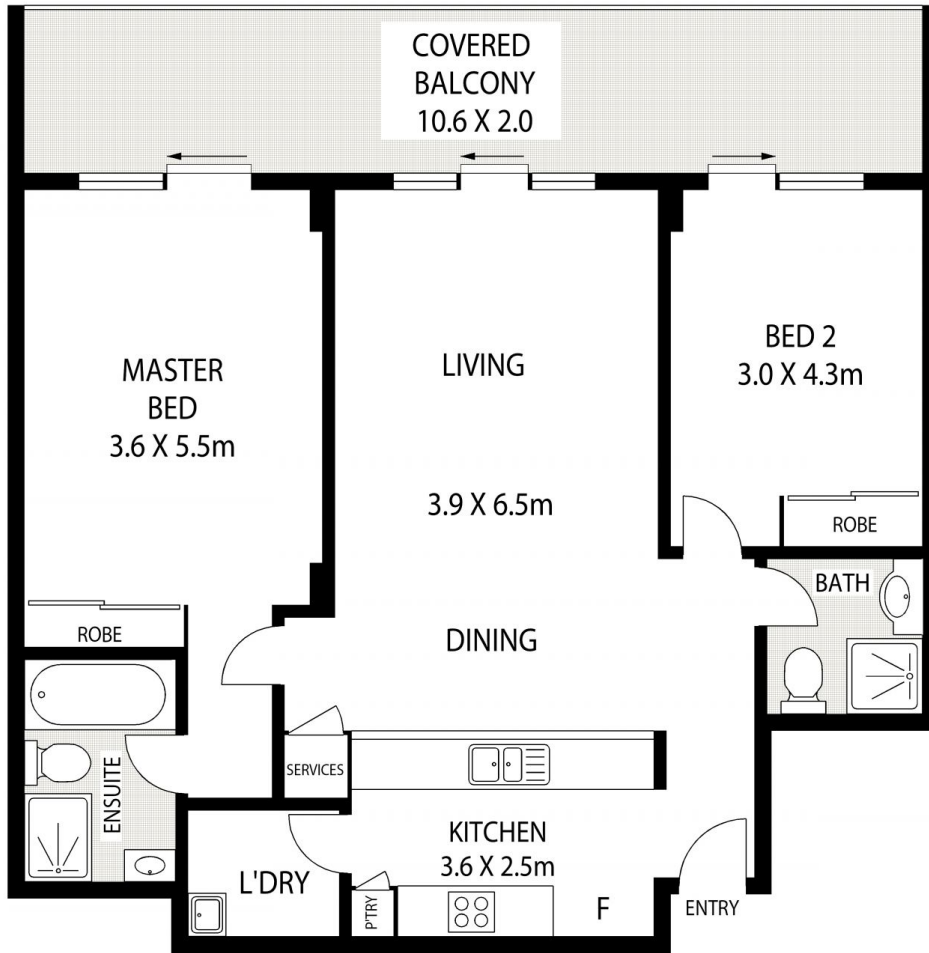
[For full version visit the website](#)



Lee Chan
02 8221 8819



Eric Chan
02 8221 8819



SECURE UNDER
COVER
CAR SPACES
44 SQM

INTERNAL AREA: 109 SQM (INCLUDING BALCONY)
TOTAL AREA:- 153 SQM (INCLUDING CAR SPACES)



145/1 BERESFORD ROAD

STRATHFIELD



Scale in metres indicative only. Dimensions are approximate. All information contained herein is gathered from sources we believe to be reliable. However we cannot guarantee its accuracy and interested persons should rely on their own enquiries.