



16/12 Bortfield Drive Chiswick NSW

2  1  1 

Ideally positioned on the second floor of a well-maintained security building, this stunning apartment captures sweeping vistas of the bay and lush greenery. Flooded with natural light and showcasing a fluid floor plan of stylish interiors, it boasts a wonderful feeling of light and space and is enhanced by a tranquil outdoor setting. Offering an idyllic bayside lifestyle this is the perfect relaxing retreat to come home and enjoy.

Set in one of Chiswick's most desirable waterside locations and within an immaculately maintained block of just 18 apartments. Enjoy easy access to the waterfront reserve, just footsteps to foreshore parks, shops, cafes, bus & ferry services.

* Desirable Northerly facing, captures sweeping bay and city-skyline views

Price : \$ 1,210,000

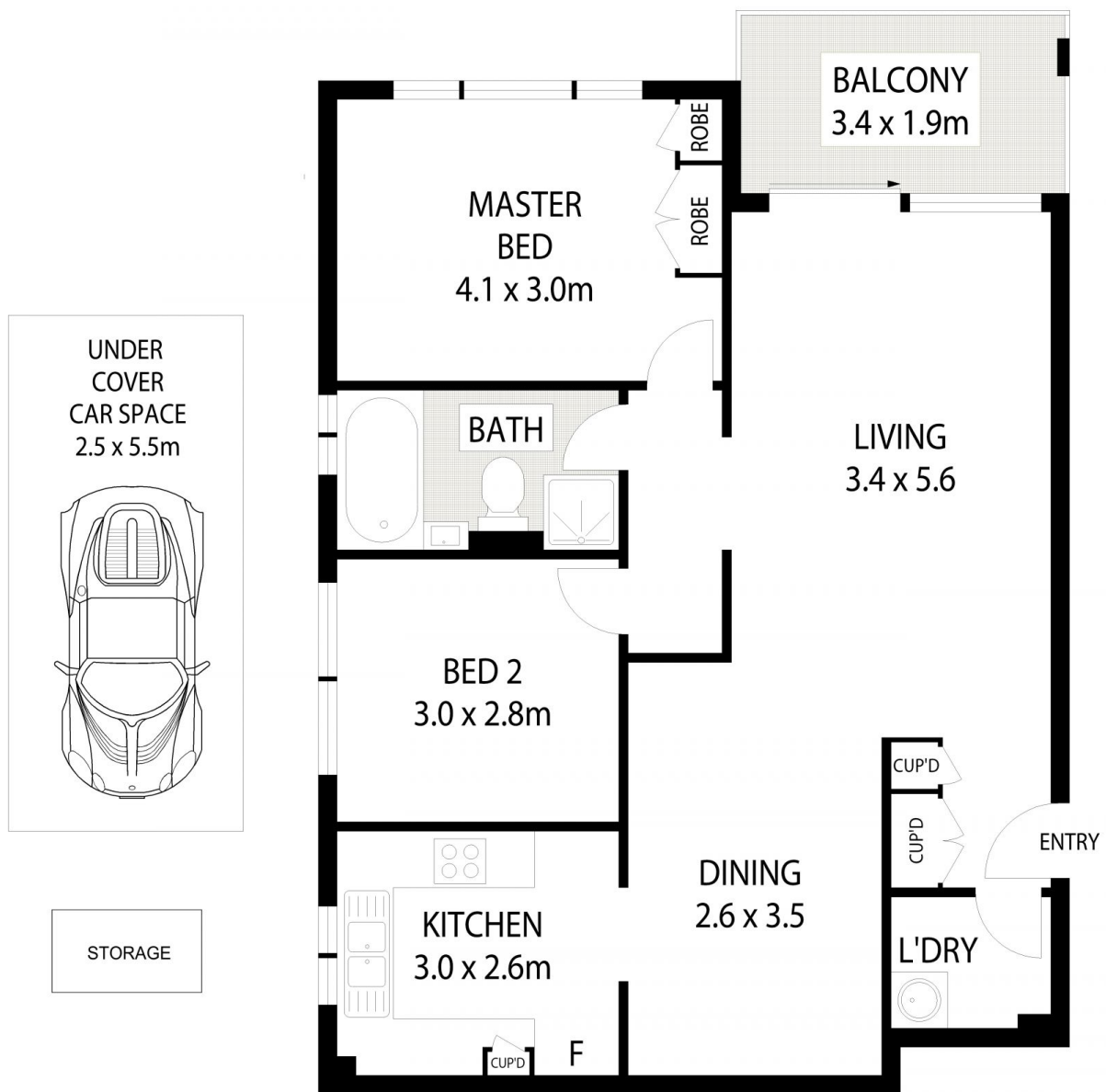
View : <https://www.landmarkrealtygroup.com.au/sale/nsw/inner-west/chiswick/residential/apartment/7955710>



Eric Chan
02 8221 8819



Lee Chan
02 8221 8819



INTERNAL AREA:- 85.7 SQM (INCLUDING BALCONY)
TOTAL AREA:- 102.3 SQM (INCLUDING CAR & STORAGE)



16/12 BORTFIELD DRIVE

CHISWICK

Scale in metres indicative only. Dimensions are approximate. All information contained herein is gathered from sources we believe to be reliable. However we cannot guarantee its accuracy and interested persons should rely on their own enquiries.

