



258/4 Bechert Road Chiswick NSW

2  2  1 

Enjoying a private elevated position with a leafy outlook, this beautifully presented two-bedroom apartment offers spacious open plan living and dining spaces with a private covered balcony for seamless outdoor entertaining. With design and function in mind, the flexible floor plan and stylish interiors combine to offer easy-care resort style living to come home and enjoy.

Nestled in the enviable Riviera Waterfront development, offering a magnificent lifestyle with full resort facilities and positioned for the utmost convenience, easy stroll to bayside parks, shops, cafés and transport services.

* Covered balcony for year-round entertaining, leafy outlook

[For full version visit the website](https://www.landmarkrealtygroup.com.au)

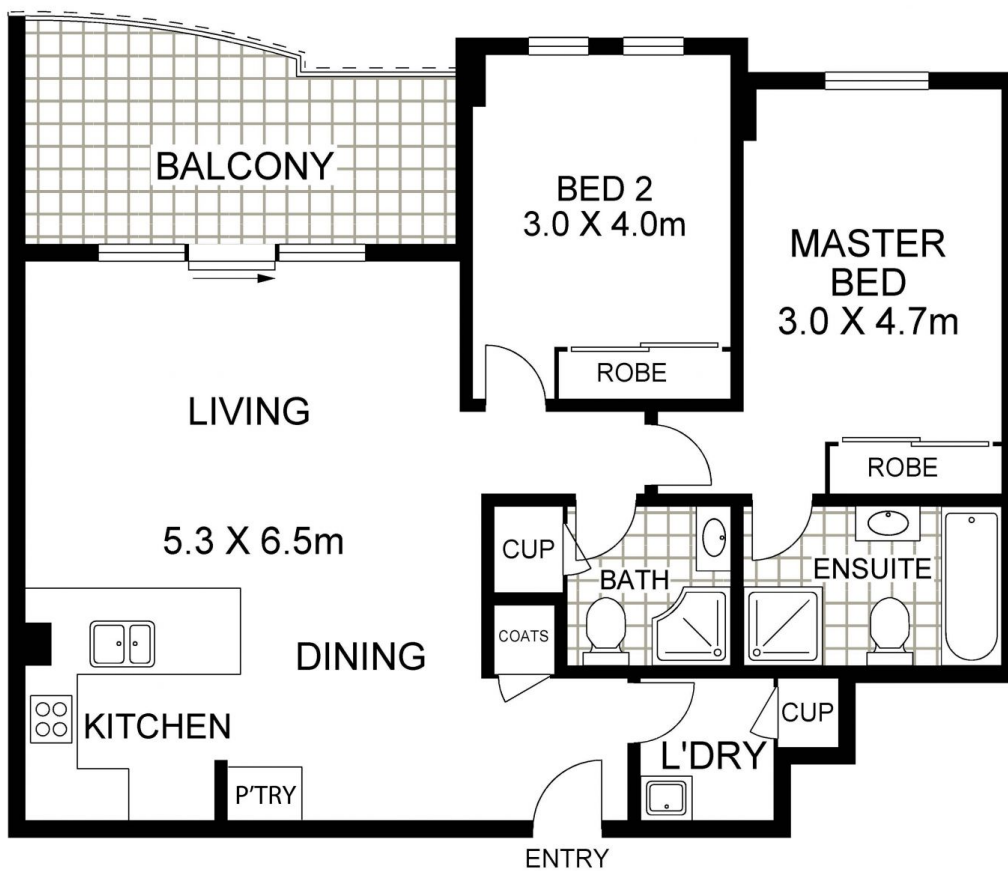
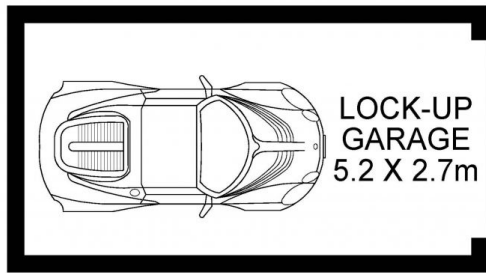
Type : Apartment
Price : For Sale | Guide \$1,050,000
View : <https://www.landmarkrealtygroup.com.au/sale/nsw/inner-west/chiswick/residential/apartment/8144394>



Lee Chan
02 8221 8819



Eric Chan
02 8221 8819



258/4 BECHERT ROAD

AREA: 92 SQM (INCLUDES BALCONY)
TOTAL: 106 SQM (INCLUDES LOCK-UP GARAGE)

CHISWICK



Scale in metres indicative only. Dimensions are approximate. All information contained herein is gathered from sources we believe to be reliable. However we cannot guarantee its accuracy and interested persons should rely on their own enquiries.