



6/267-277 Castlereagh Street Sydney NSW

2  2  1 

Set in an unbeatable location within the landmark 'Museum Towers' and positioned on the 11th floor, this superb city residence promises to deliver the ultimate city lifestyle. Immaculately presented and capturing a sunny dual aspect of both East and West, the apartment offers generous light-filled interiors and a great functional layout. Exceptionally positioned in the heart of the city, just footsteps to world-class shopping and dining, harbourside parklands and city-wide transport.

- * Dual aspect for excellent crossflow, winter garden for year-round entertaining
- * Light-filled open plan living and dining area, sunny Easterly aspect
- * Newly refreshed: new engineered flooring, freshly

[For full version visit the website](https://www.landmarkrealtygroup.com.au)

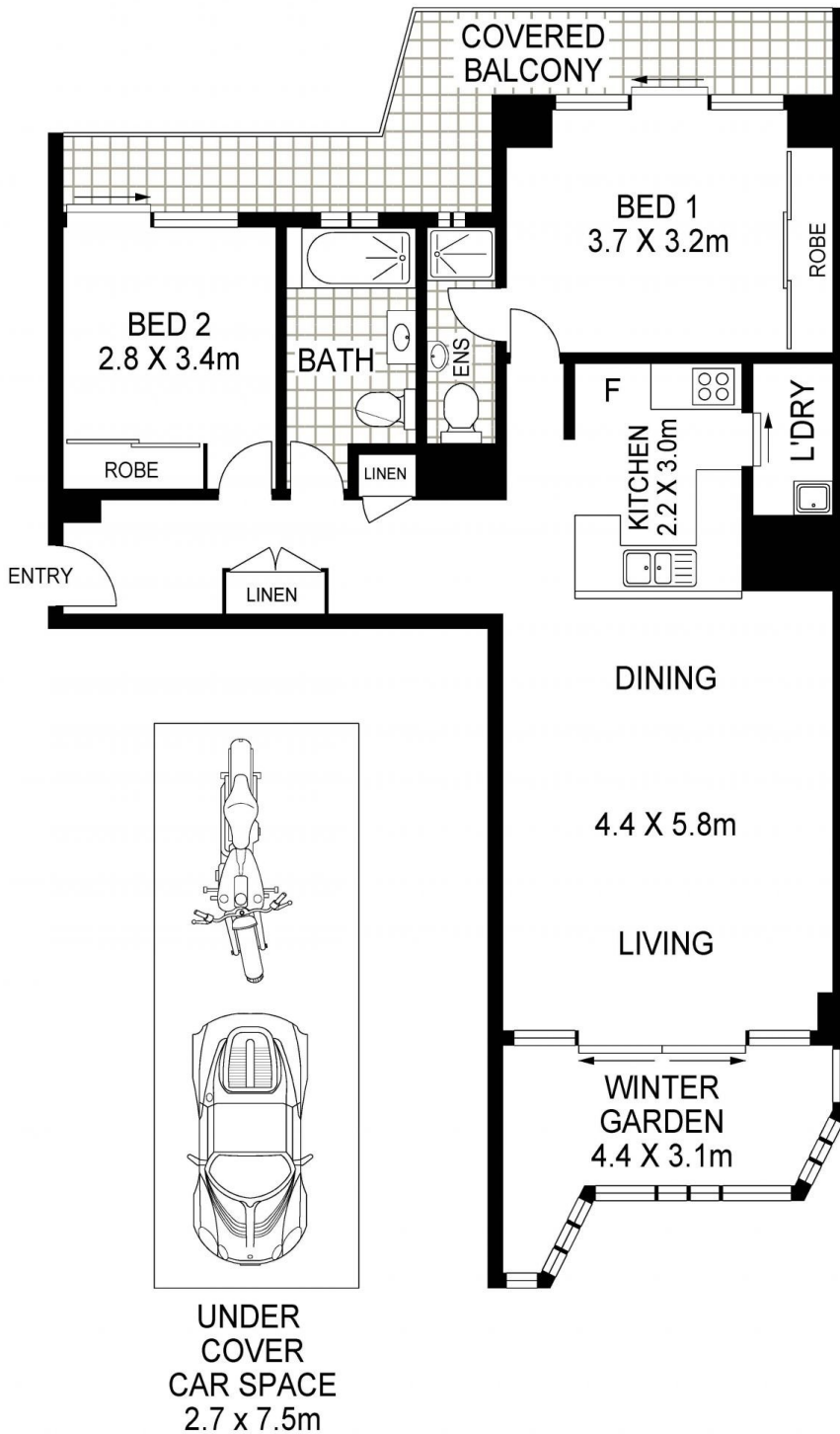
Type : Apartment
Price : Contact Agent
Land Size : 126 sqm
View : <https://www.landmarkrealtygroup.com.au/sale/nsw/sydney-city/sydney/residential/apartment/8149429>



Lee Chan
02 8221 8819



Eric Chan
02 8221 8819



AREA: 104 SQM (INCLUDES BALCONY)
TOTAL: 124 SQM (INCLUDES CAR SPACE & BALCONY)



6/267 CASTLEREAGH STREET

SYDNEY



Scale in metres indicative only. Dimensions are approximate. All information contained herein is gathered from sources we believe to be reliable. However we cannot guarantee its accuracy and interested persons should rely on their own enquiries.