



**348/1 The Promenade Chiswick NSW**

1  1  1 

Set on a desirable elevated setting this spacious one-bedroom apartment offers an exceptional lifestyle of low-maintenance living in mind, with welcoming free-flowing interiors, the light-filled open plan living and dining spaces lead out to a spacious entertaining terrace ideal for year-round entertaining.

Nestled in the enviable Riviera Waterfront development, offering a magnificent lifestyle with full resort facilities and positioned for the utmost convenience, easy stroll to bayside parks, shops, cafés and transport services.

- \* Desirable elevated corner position, sunny Easterly facing, leafy outlook
- \* Open plan, light-filled living & dining room spills out to

[For full version visit the website](https://www.landmarkrealtygroup.com.au)

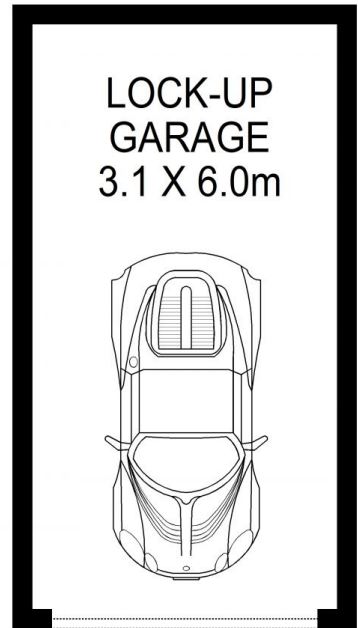
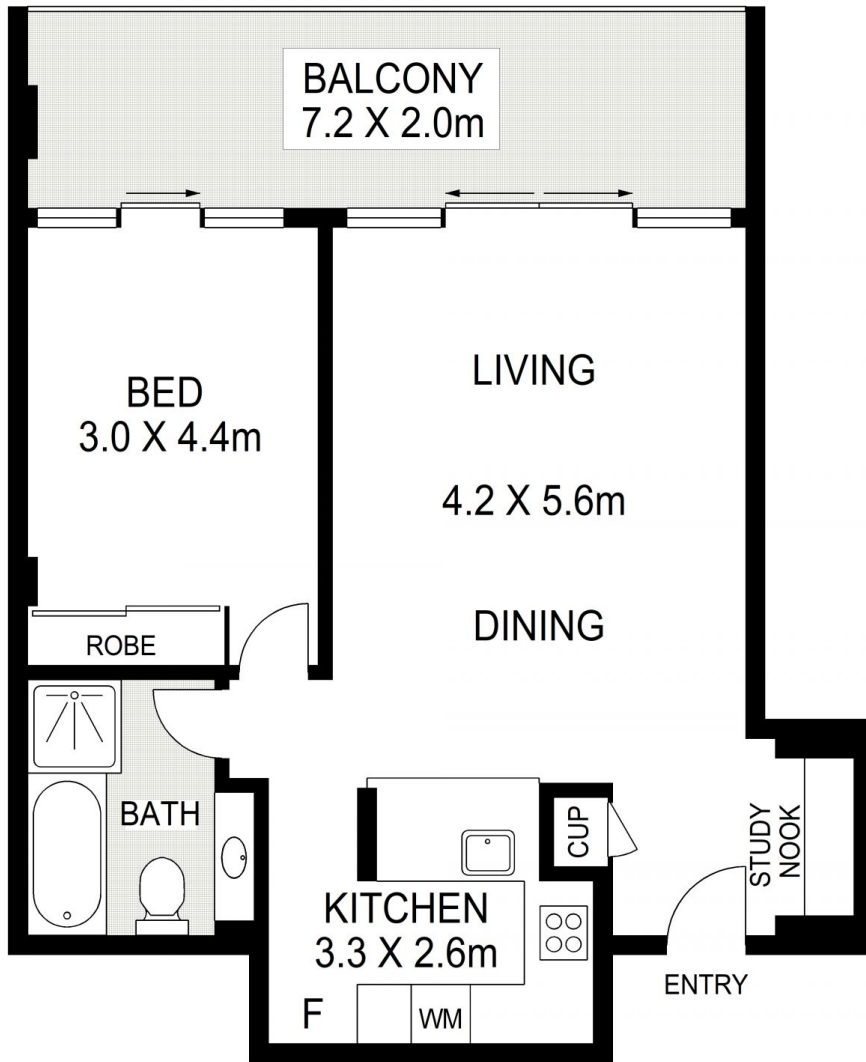
**Type** : Apartment  
**Price** : Contact Agent  
**View** : <https://www.landmarkrealtygroup.com.au/sale/nsw/inner-west/chiswick/residential/apartment/8159475>



**Eric Chan**  
02 8221 8819



**Lee Chan**  
02 8221 8819



**348/1 THE PROMENADE**

AREA: 70 SQM (INCLUDING BALCONY)  
TOTAL AREA: 87 SQM (INCLUDING BALCONY & GARAGE)

**CHISWICK**



Scale in metres indicative only. Dimensions are approximate. All information contained herein is gathered from sources we believe to be reliable. However we cannot guarantee its accuracy and interested persons should rely on their own enquiries.